



ALBUMI I SHITJEVE

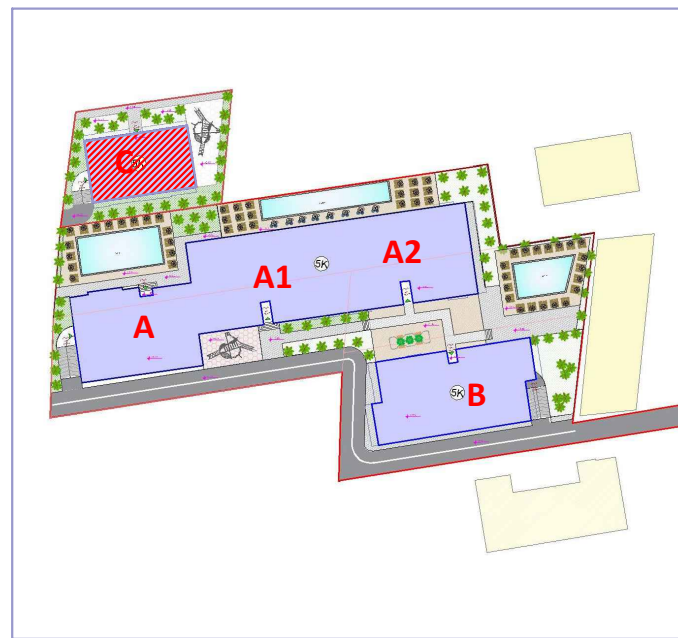
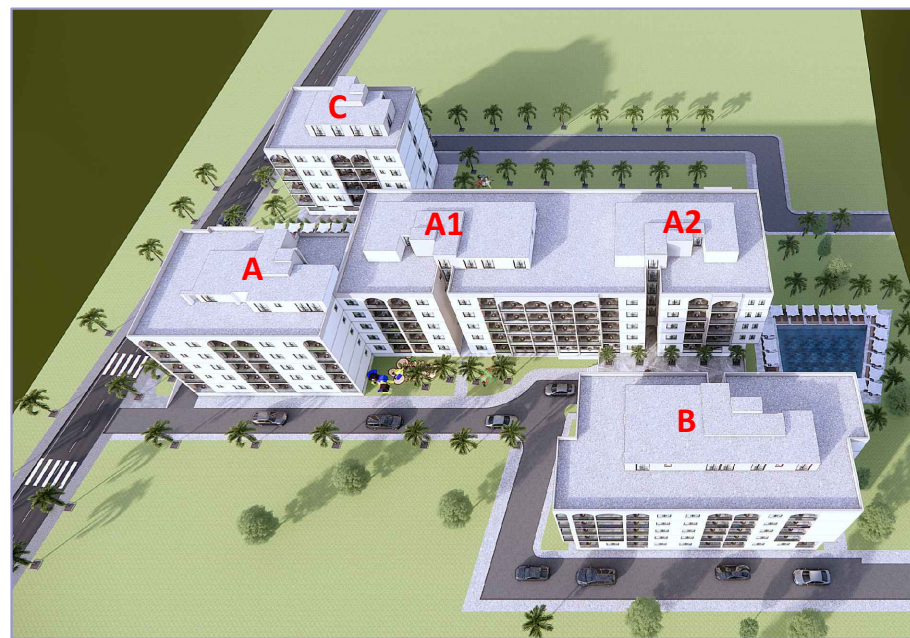
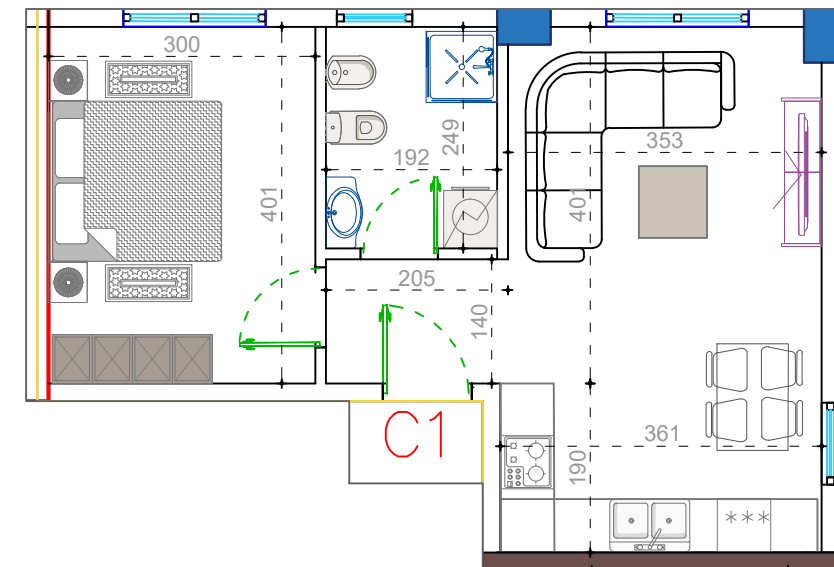
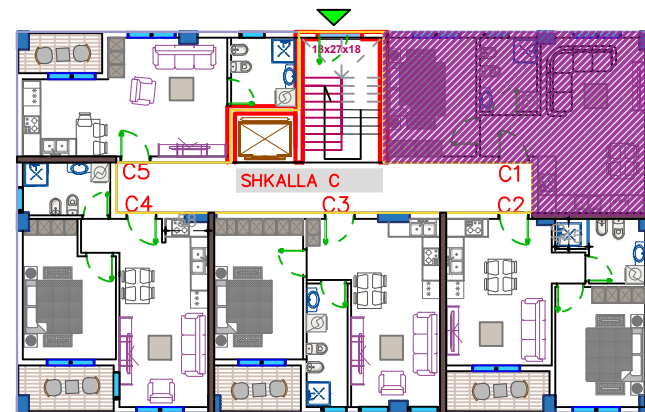
OBJEKTI : STRUKTURE AKOMODUESE 5 KAT ME PODRUM

OBJEKTI C (Shkalla C)

Zhvillues : Shoqeria "D&S Construction Company"

Adresa: Njesia Administrative Golem, Bashkia Kavaje

PLANIMETRIA E OBJEKTIT



APARTAMENTI C1 (1+1)

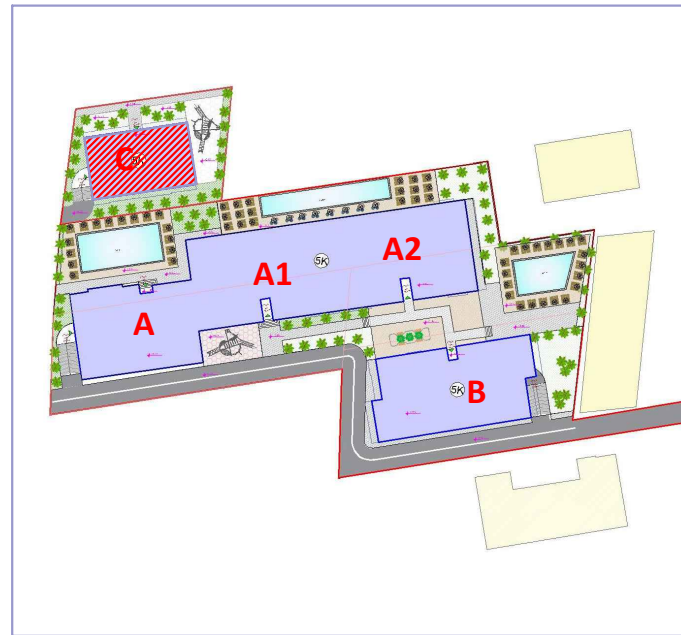
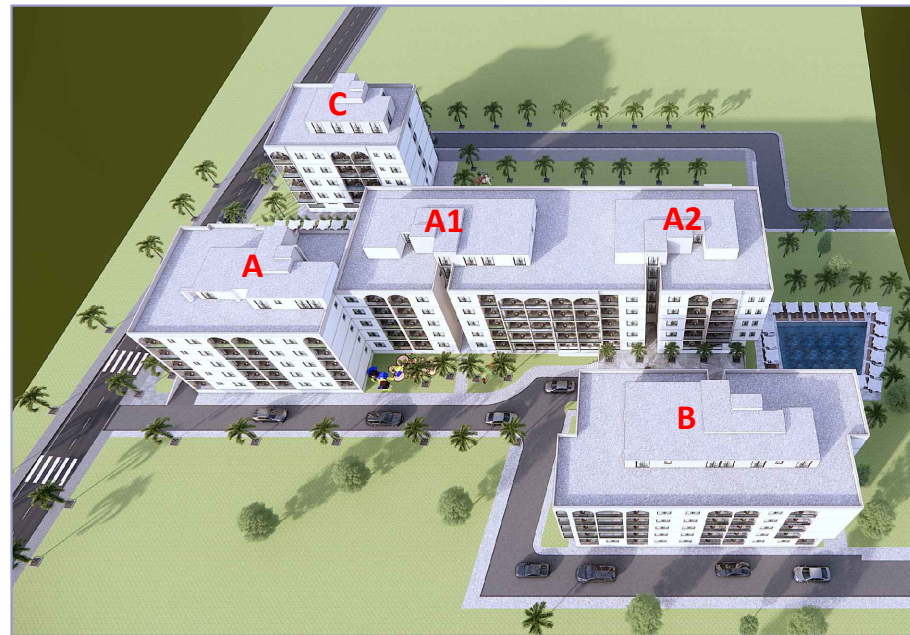
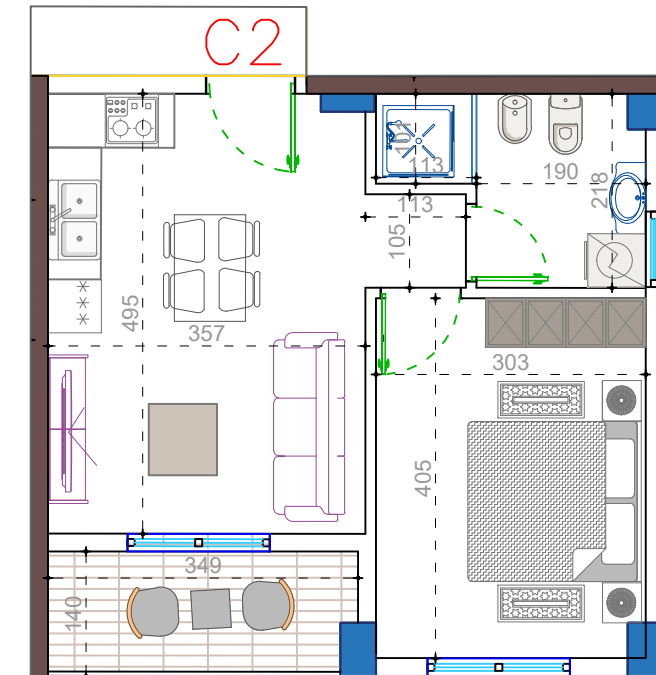
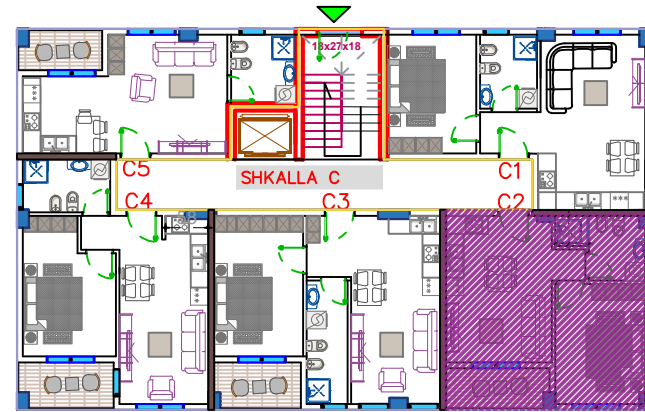
(Objekti C - Shkalla C)

Siperfaqe e apartamentit = 47.00 m²

Siperfaqe e perbashket = 7.90 m²

Siperfaqe Totale = 54.90 m²

PLANIMETRIA E OBJEKTIT

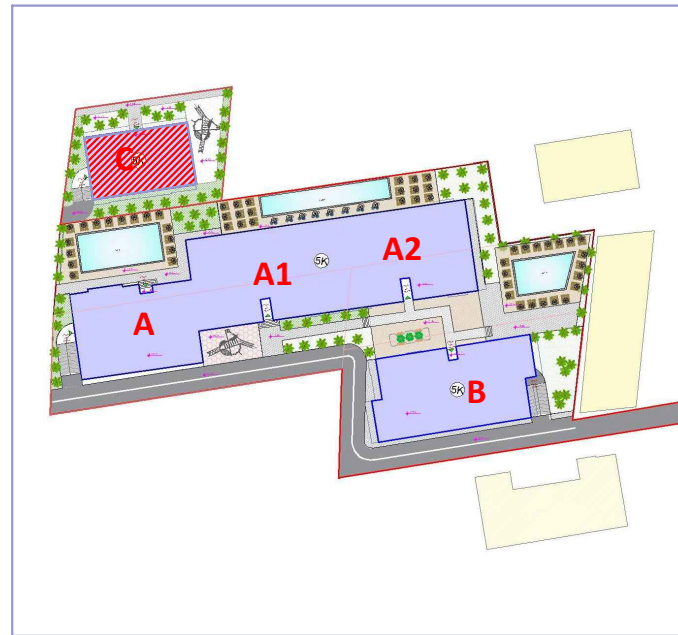
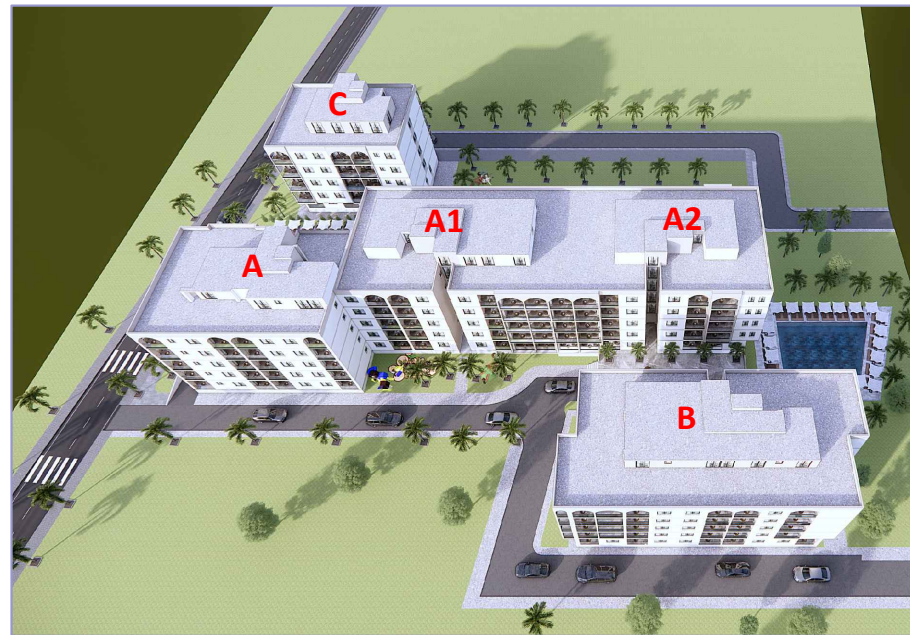
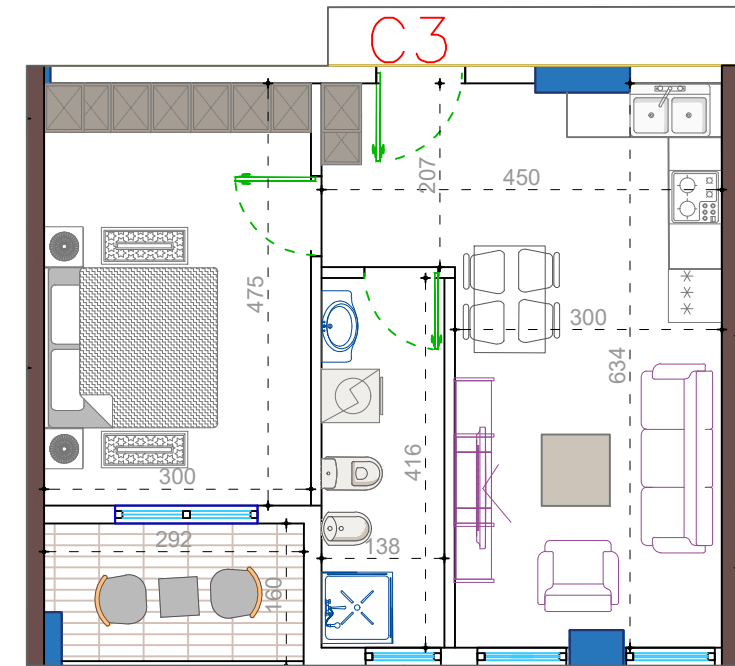
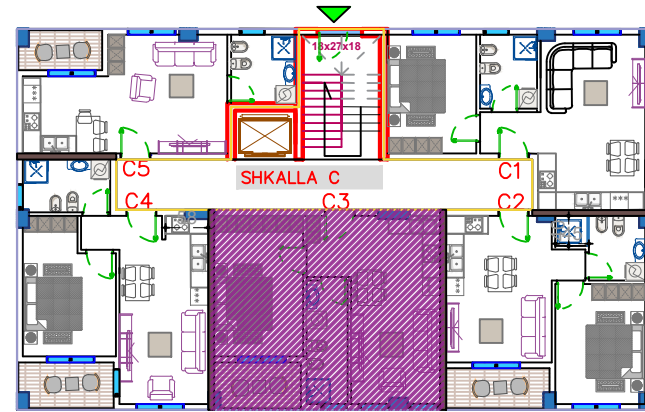


APARTAMENTI C2 (1+1)

(Objekti C - Shkalla C)

Siperfaqe e apartamentit = 46.80 m²
Siperfaqe e perbashket = 7.80 m²
Siperfaqe Totale = 55.60 m²

PLANIMETRIA E OBJEKTIT



APARTAMENTI C3 (1+1)

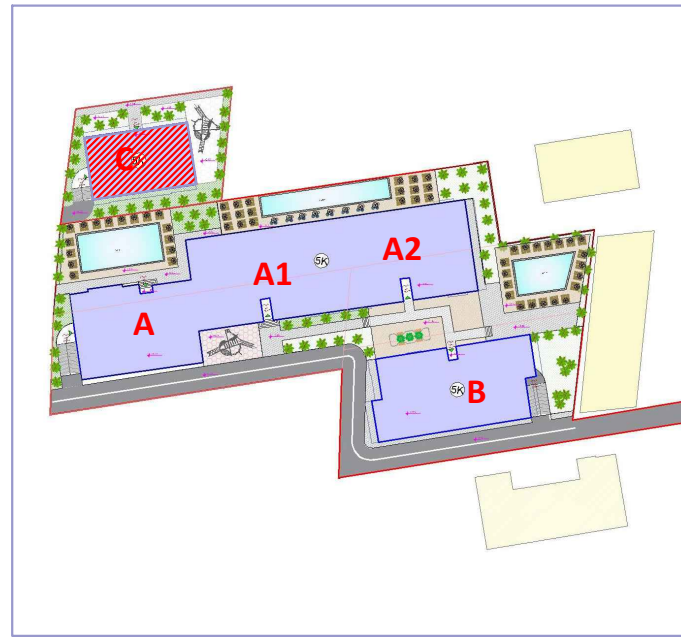
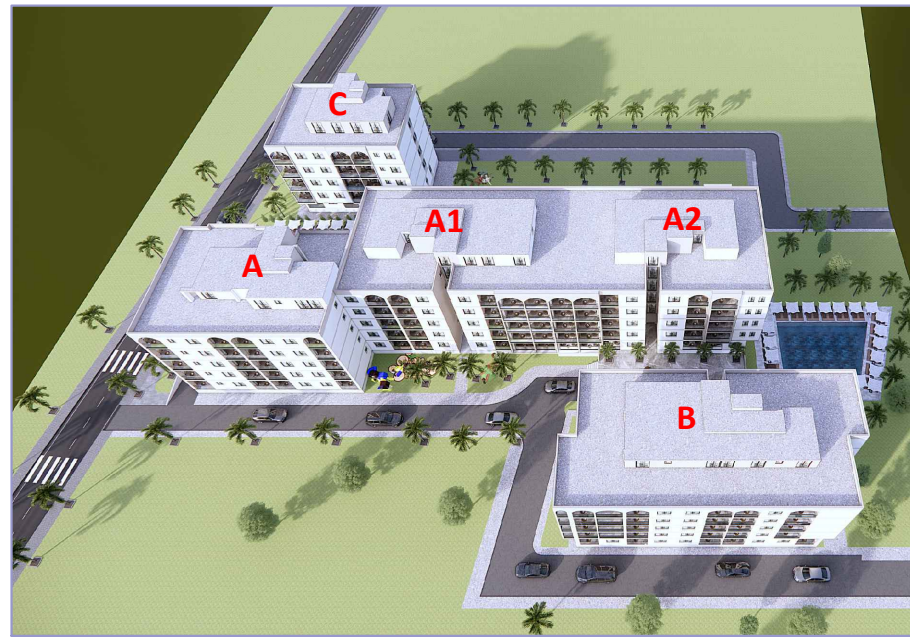
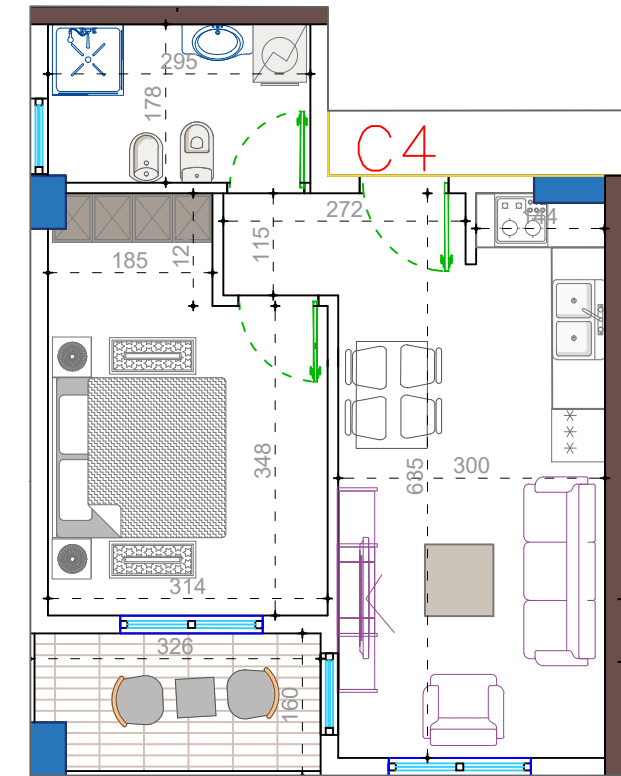
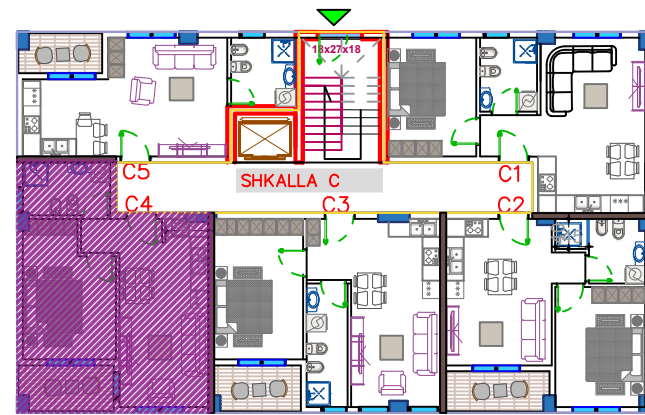
(Objekti C - Shkalla C)

Siperfaqe e apartamentit = 52.80 m²

Siperfaqe e perbashket = 8.80 m²

Siperfaqe Totale = 61.60 m²

PLANIMETRIA E OBJEKTIT

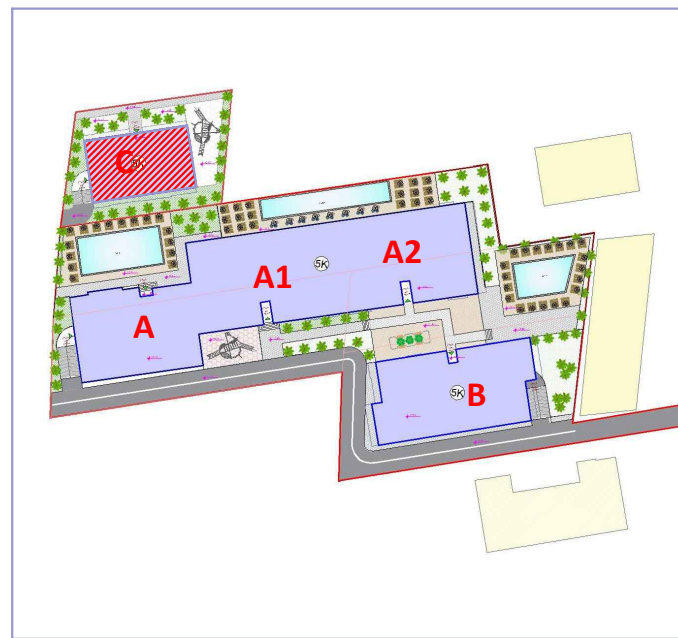
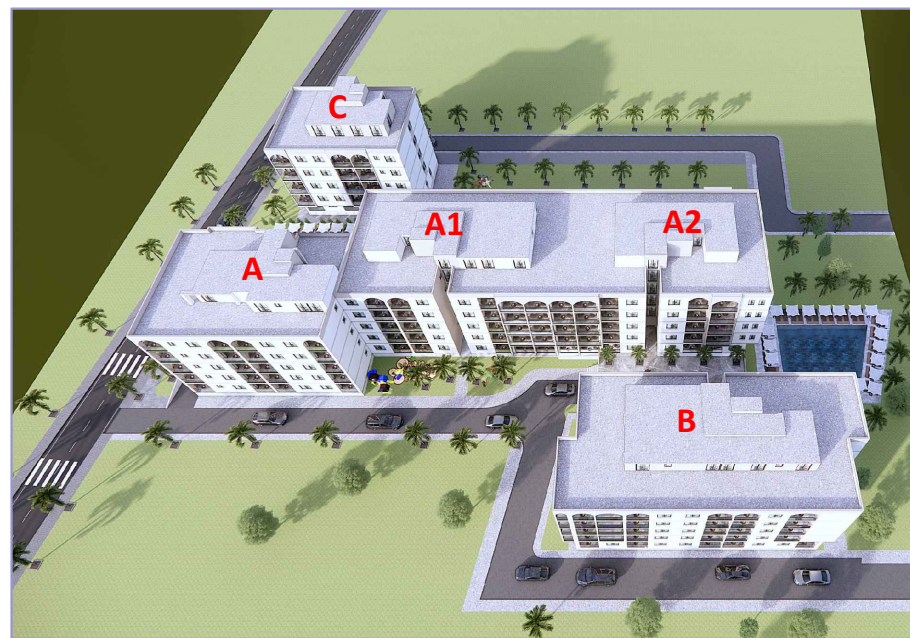
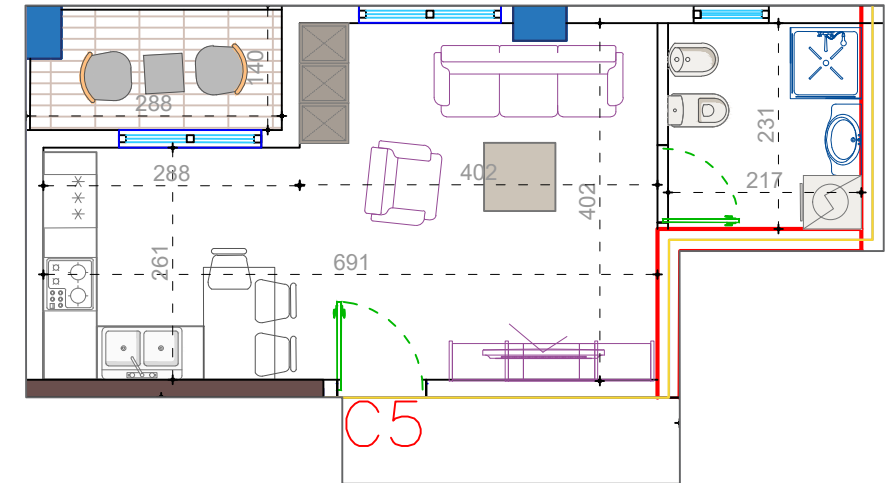
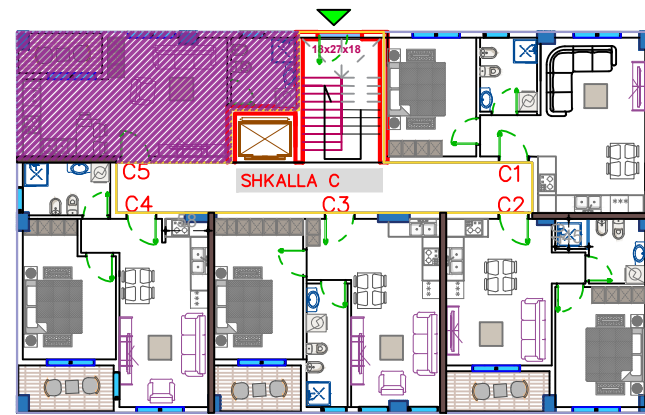


APARTAMENTI C4 (1+1)

(Objekti C - Shkalla C)

Siperfaqe e apartamentit = 50.30 m²
Siperfaqe e perbashket = 8.60 m²
Siperfaqe Totale = 58.90 m²

PLANIMETRIA E OBJEKTIT

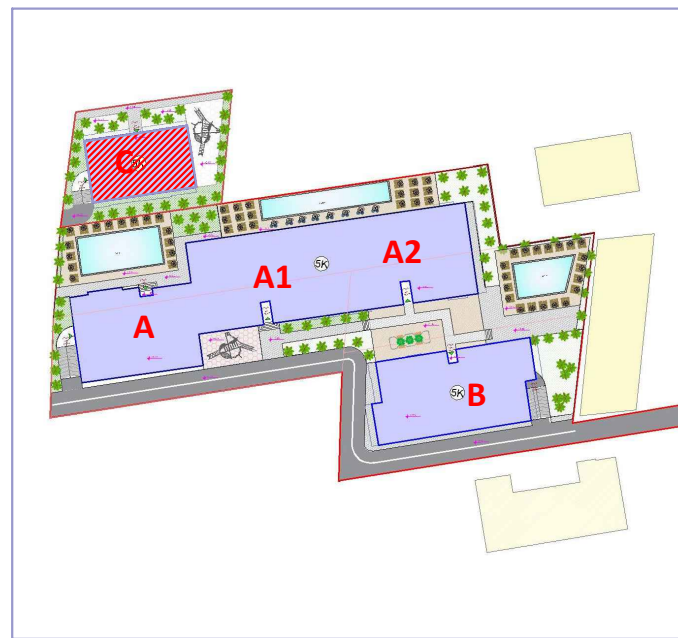
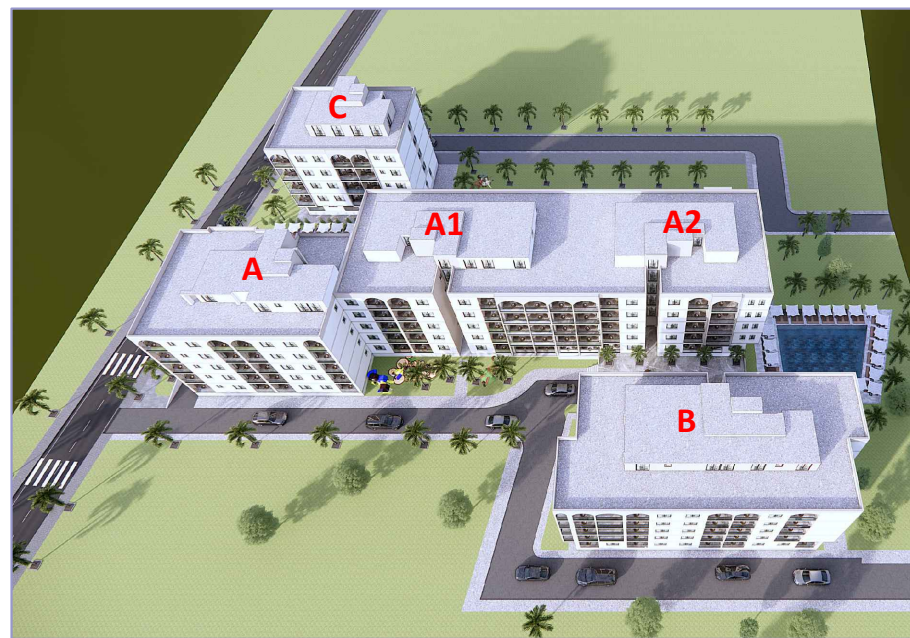
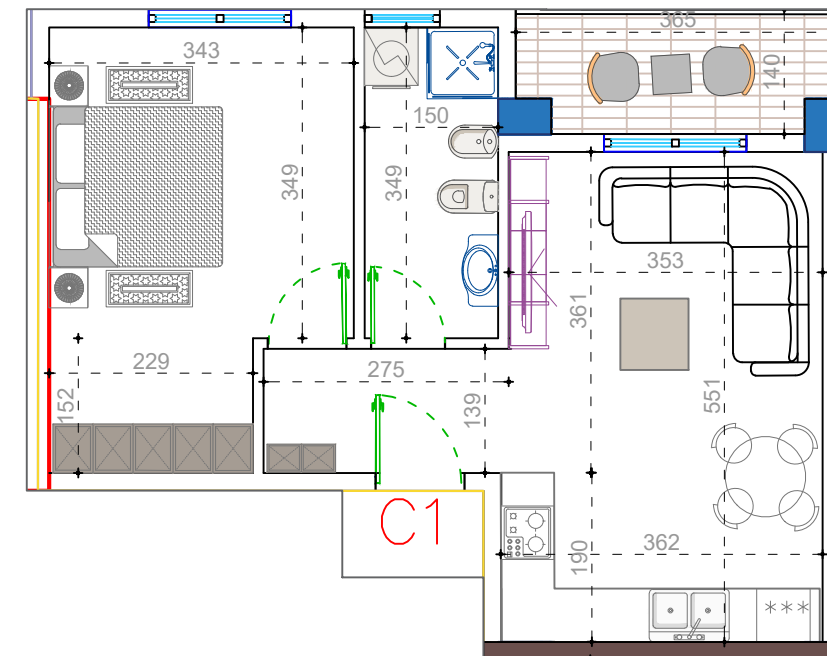
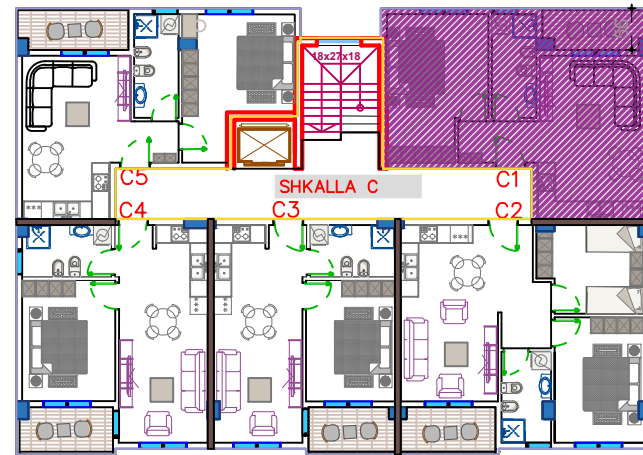


APARTAMENTI C5 (Garsoniere)

(Objekti C - Shkalla C)

Siperfaqe e apartamentit = 37.60 m²
 Siperfaqe e perbashket = 6.40 m²
 Siperfaqe Totale = 44.00 m²

PLANIMETRIA E OBJEKTIT

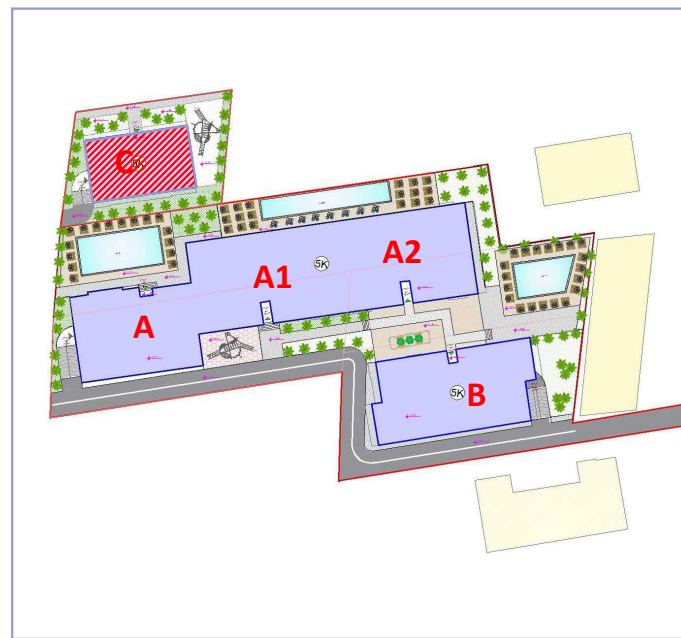
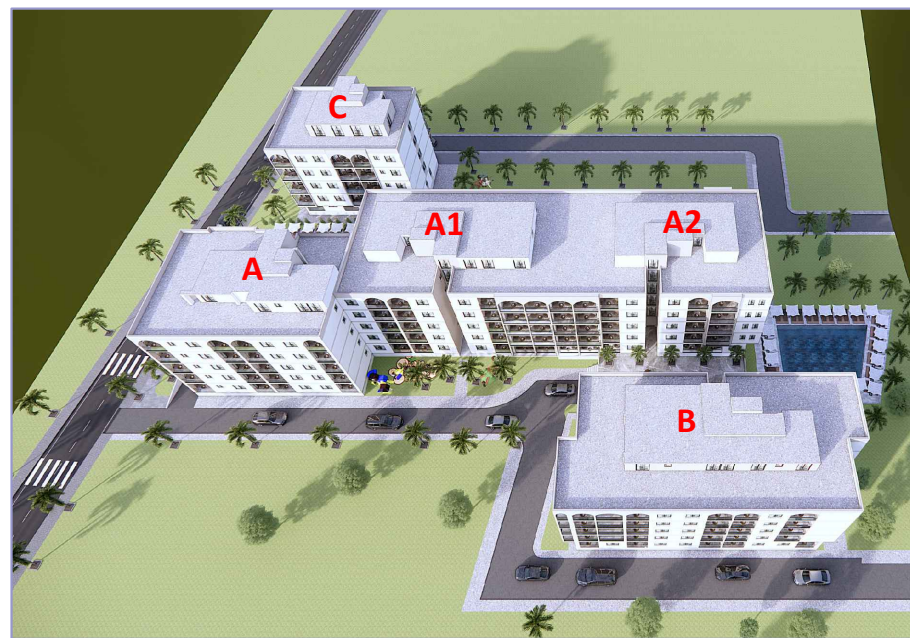
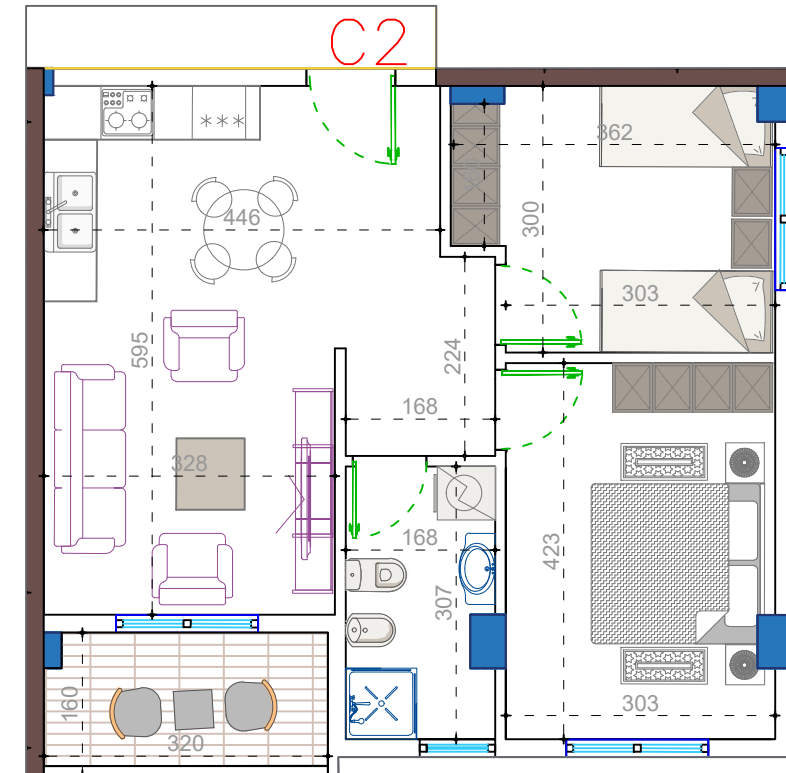
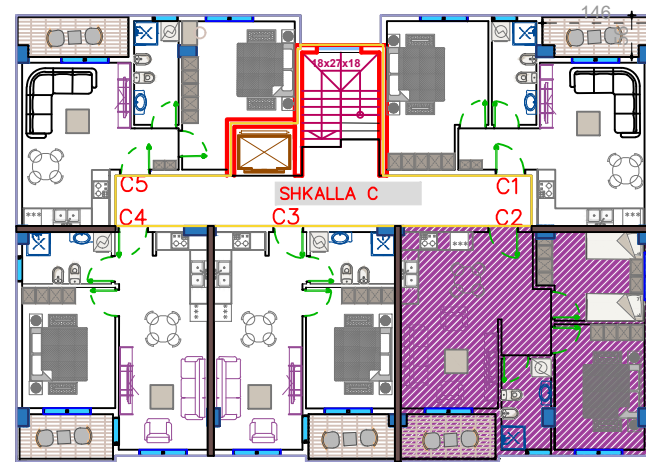


APARTAMENTI C1 (1+1)

(Objekti C - Shkalla C)

Siperfaqe e apartamentit = 56.10 m²
 Siperfaqe e perbashket = 8.20 m²
 Siperfaqe Totale = 64.30 m²

PLANIMETRIA E OBJEKTIT

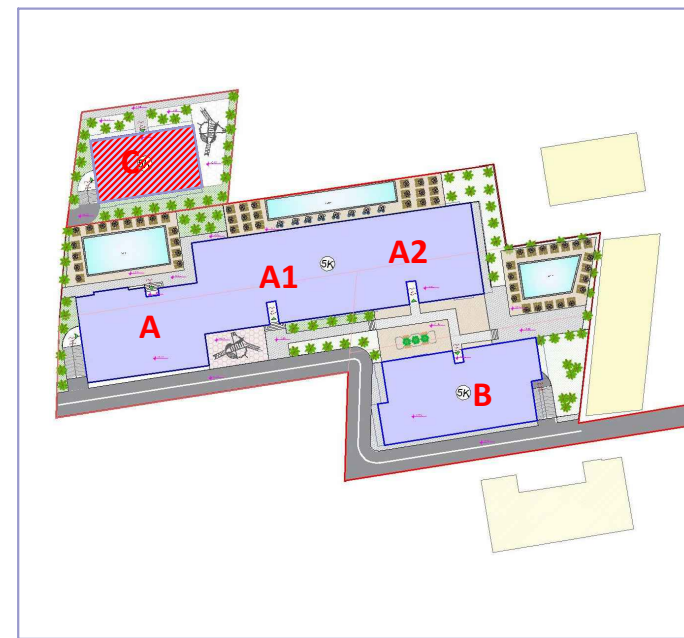
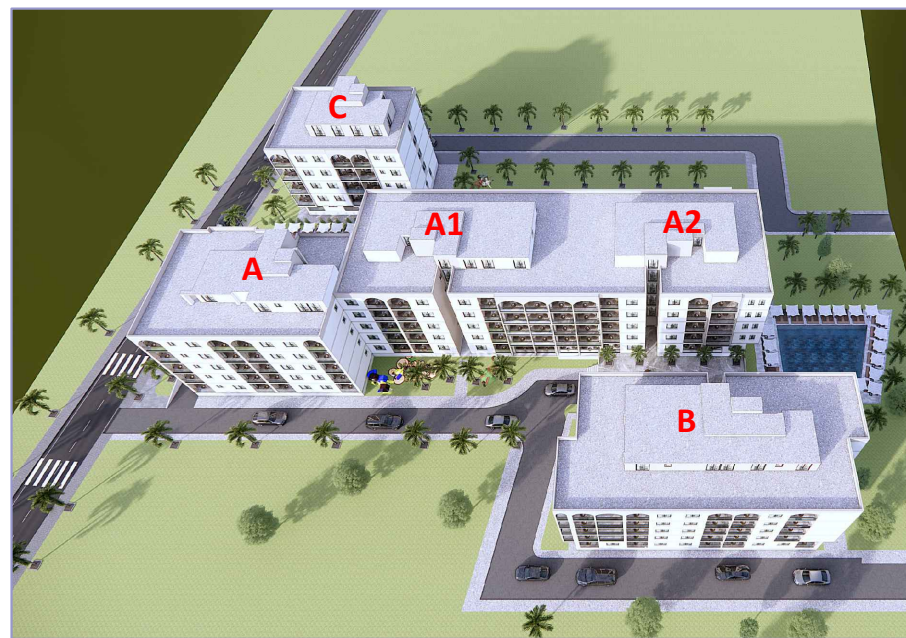
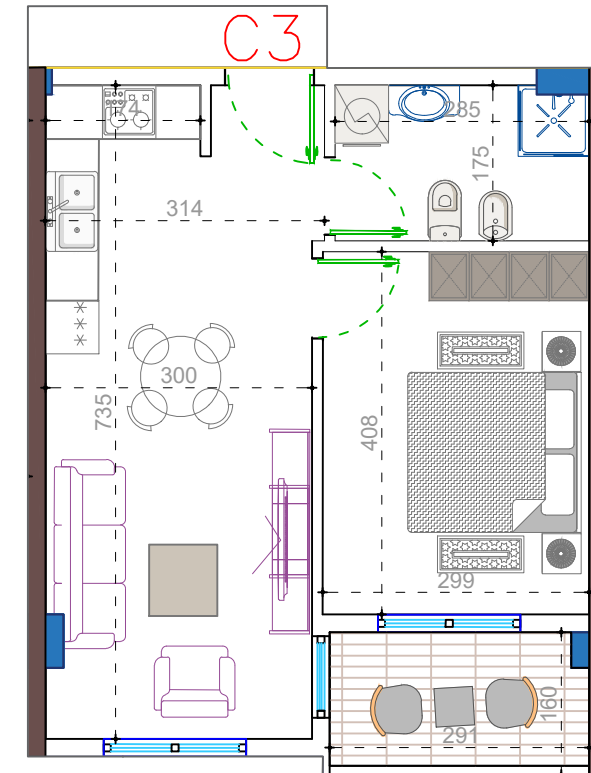
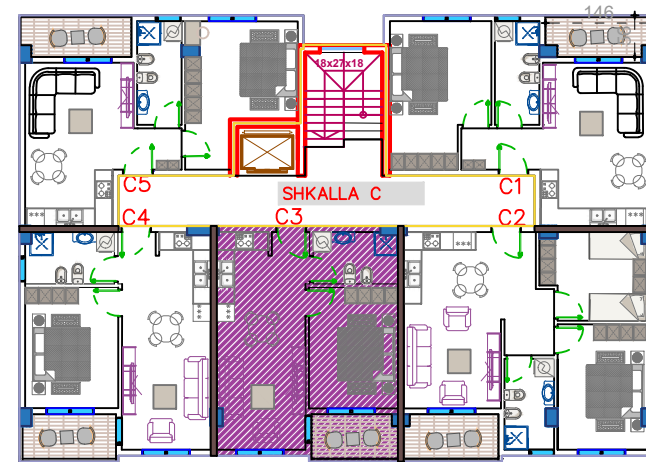


APARTAMENTI C2 (2+1)

(Objekti C - Shkalla C)

Siperfaqe e apartamentit = 67.00 m²
 Siperfaqe e perbashket = 9.10 m²
 Siperfaqe Totale = 76.10 m²

PLANIMETRIA E OBJEKTIT



APARTAMENTI C3 (1+1)

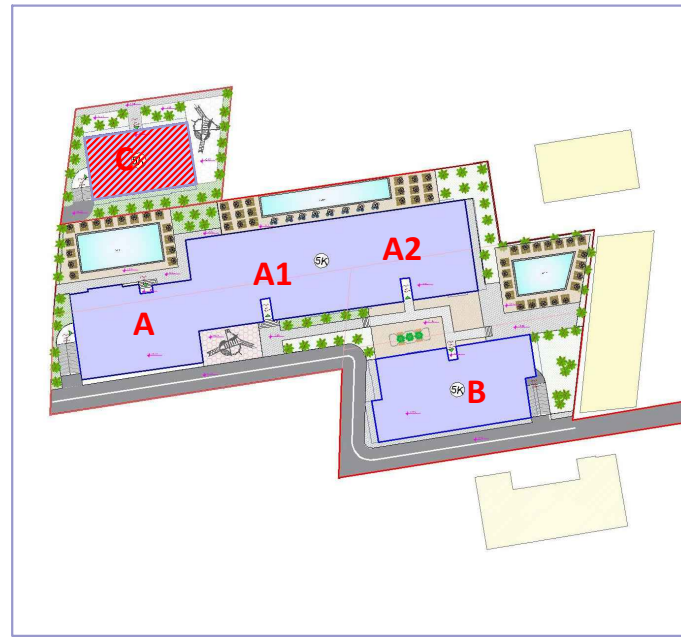
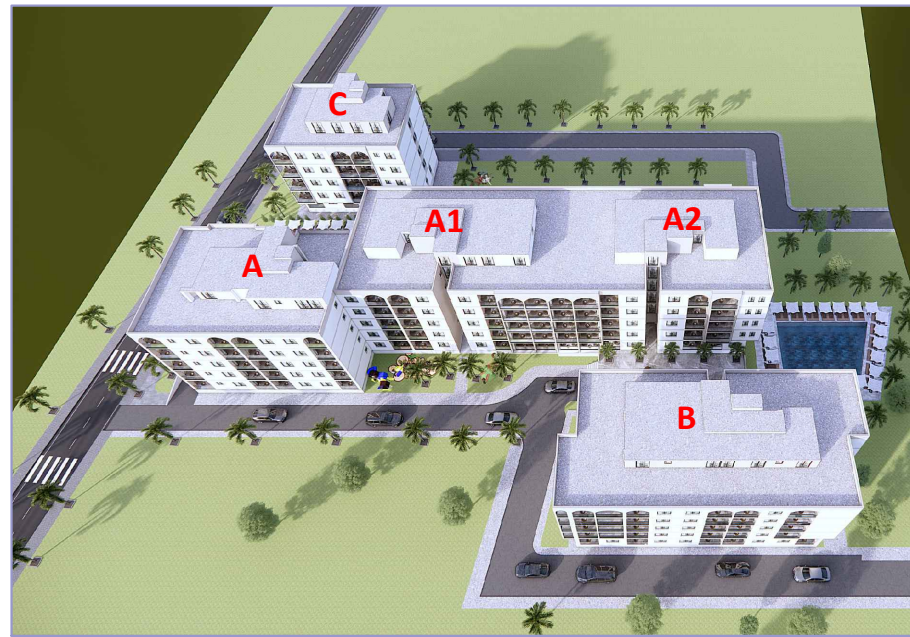
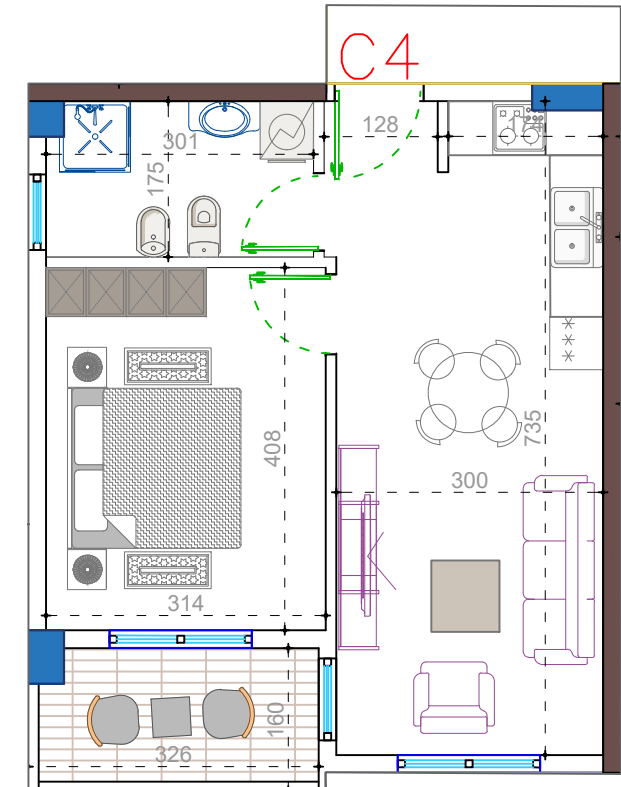
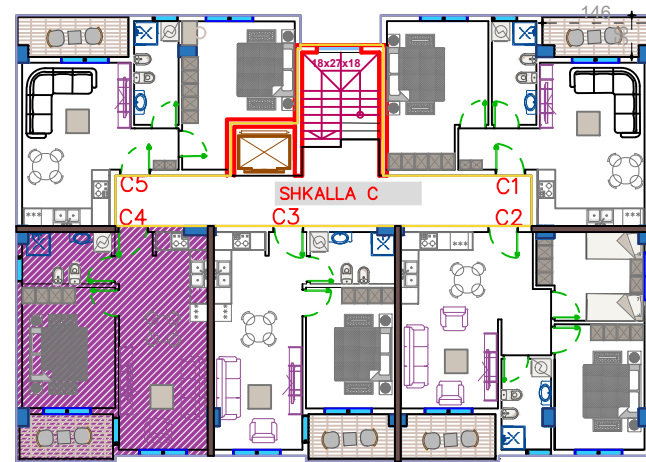
(Objekti C - Shkalla C)

Siperfaqe e apartamentit = 49.60 m²
Siperfaqe e perbashket = 7.20 m²
Siperfaqe Totale = 56.80 m²

STRUKTURE AKOMODUESE 5 KAT + PODRUM DHE PISHINE - OBJEKTI C (Shkalla C)

KATI PARE

PLANIMETRIA E OBJEKTIT

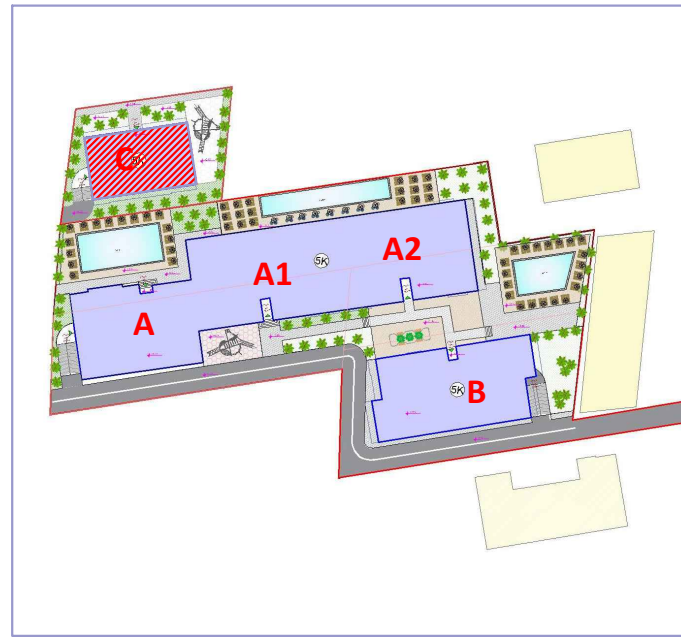
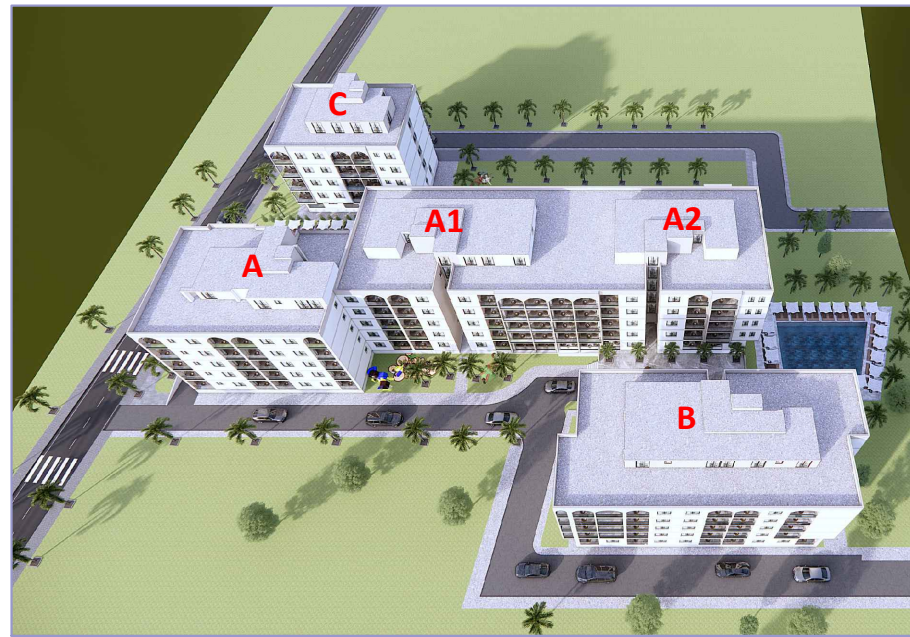
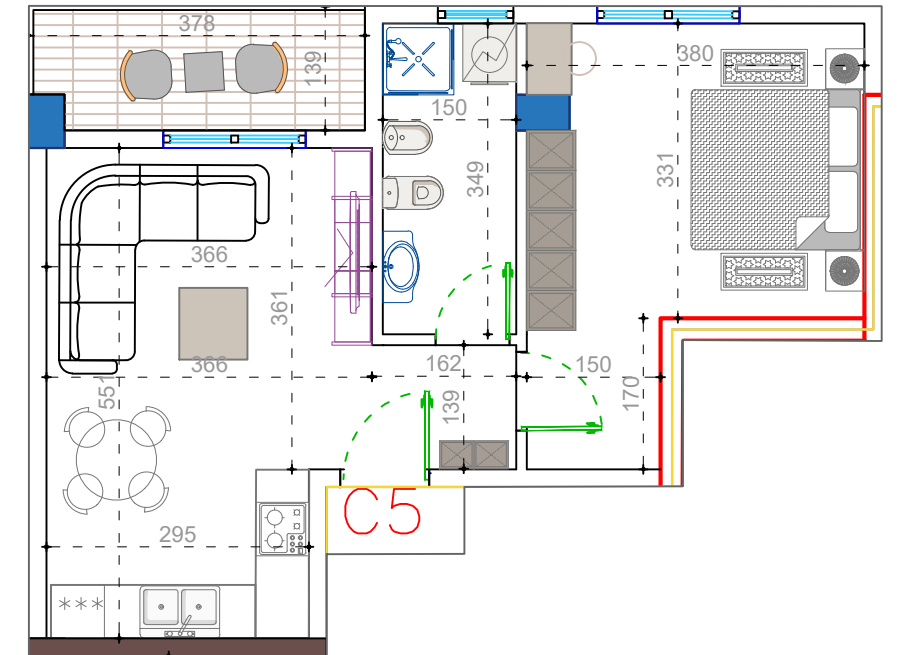
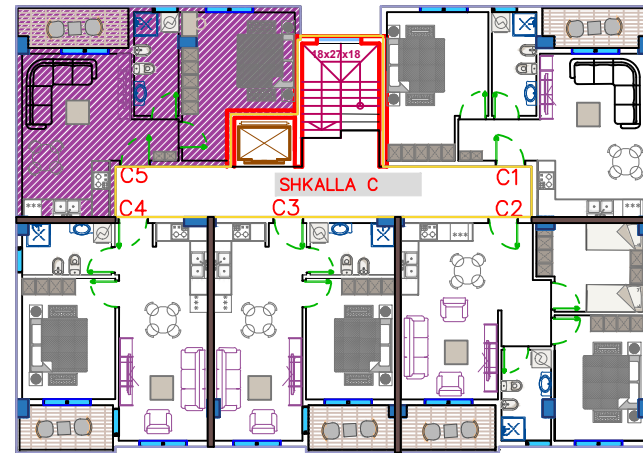


APARTAMENTI C4 (1+1)

(Objekti C - Shkalla C)

Siperfaqe e apartamentit = 51.25 m2
 Siperfaqe e perbashket = 7.50 m2
 Siperfaqe Totale = 58.75 m2

PLANIMETRIA E OBJEKTIT



APARTAMENTI C5 (1+1)

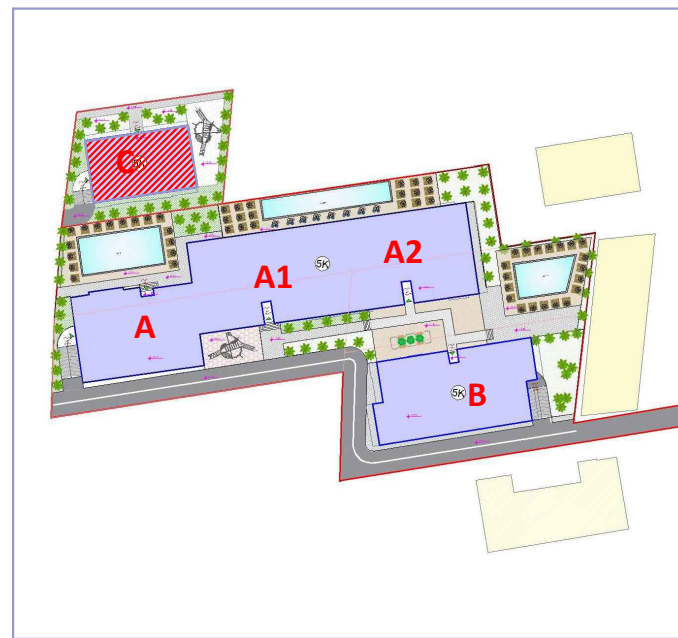
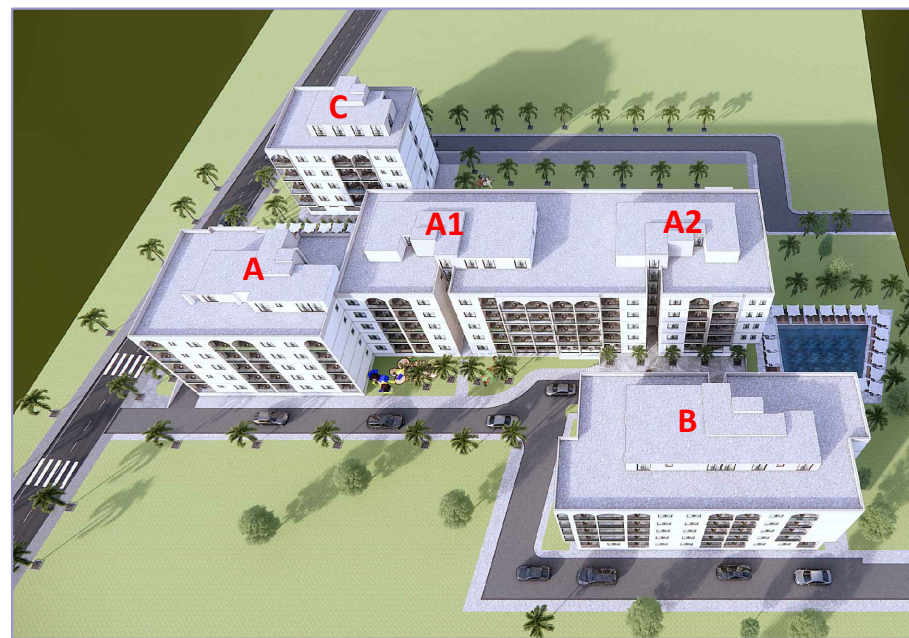
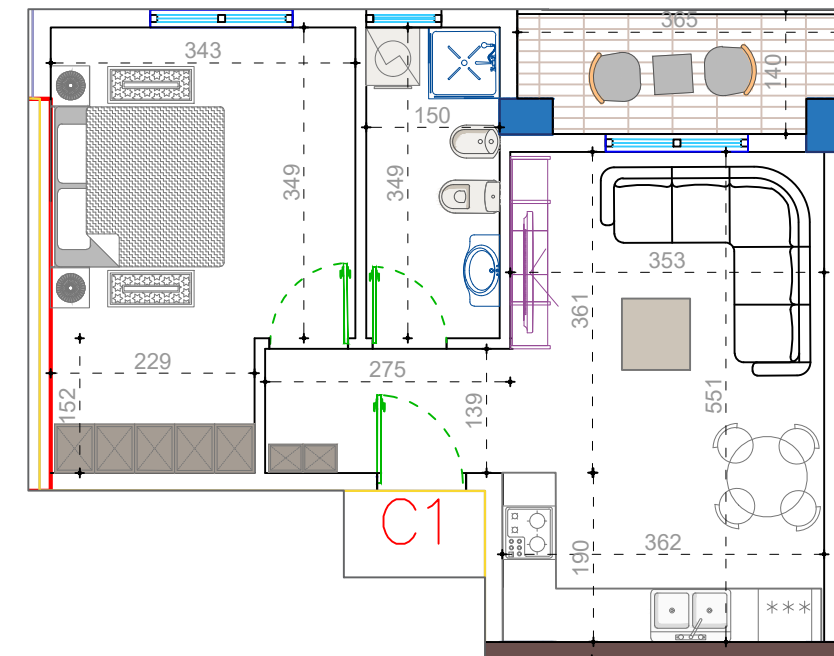
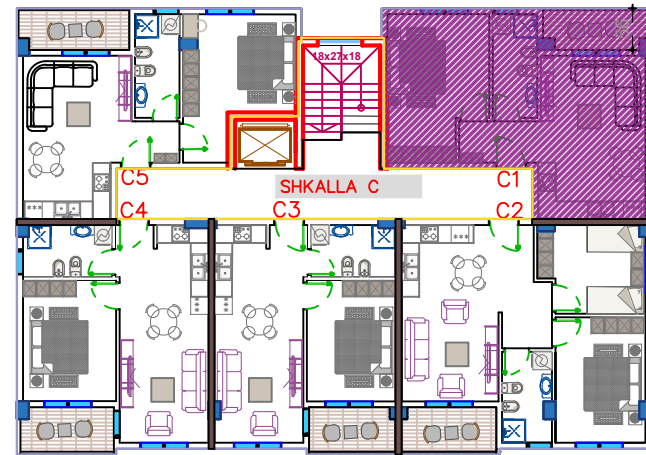
(Objekti C - Shkalla C)

Siperfaqe e apartamentit = 53.50 m²

Siperfaqe e perbashket = 7.80 m²

Siperfaqe Totale = 61.30 m²

PLANIMETRIA E OBJEKTIT



APARTAMENTI C1 (1+1)

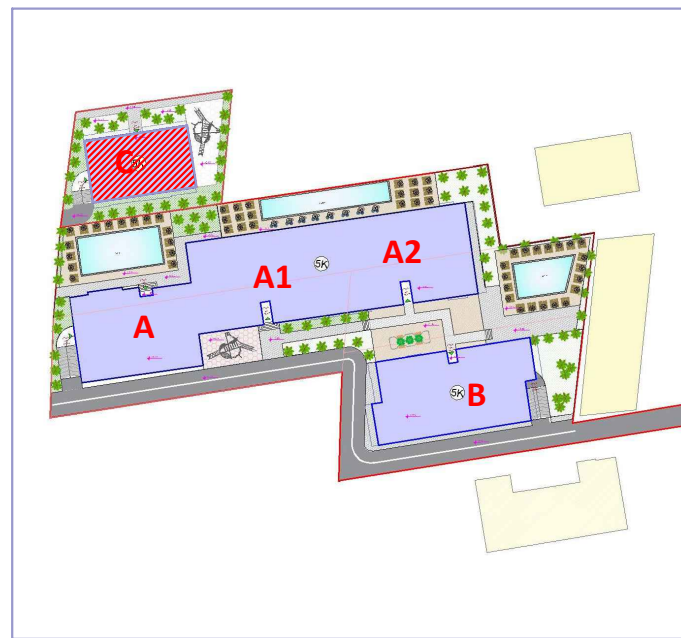
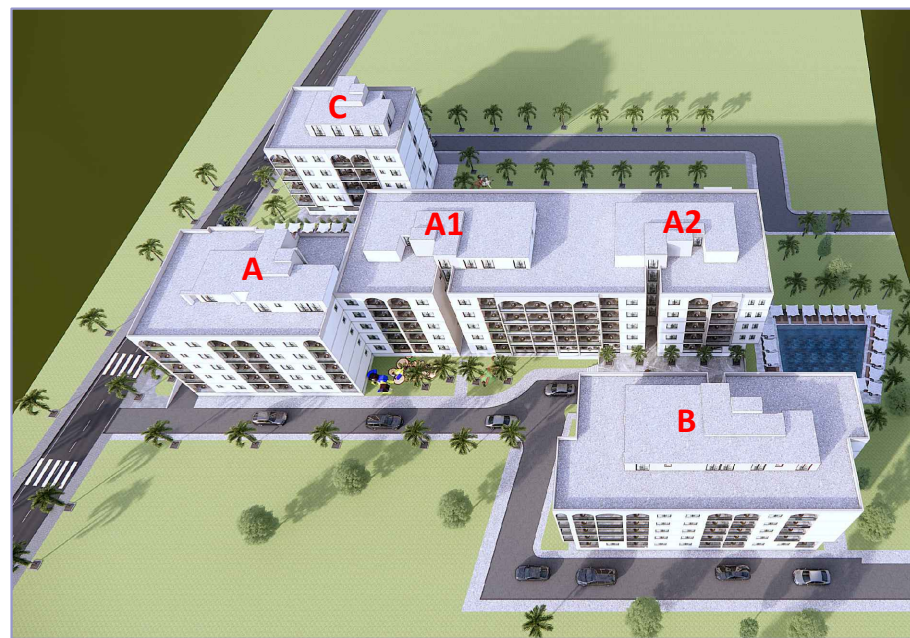
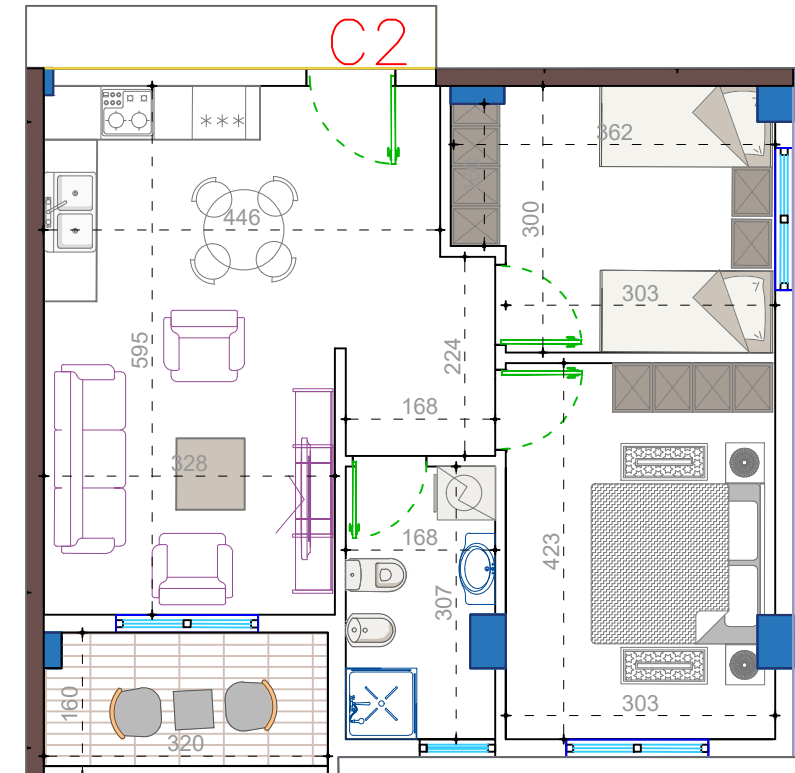
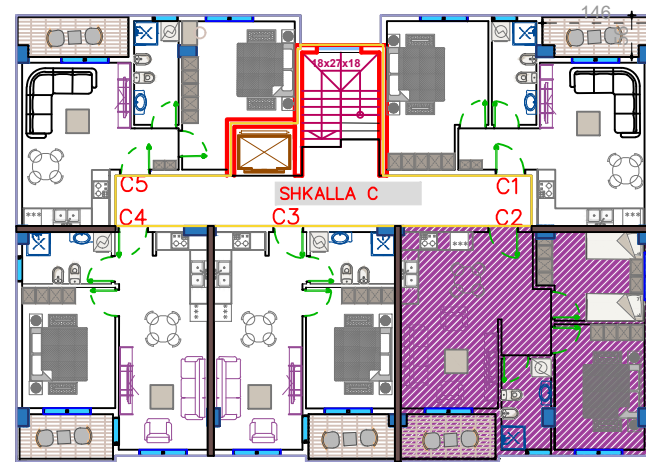
(Objekti C - Shkalla C)

Siperfaqe e apartamentit = 56.10 m²

Siperfaqe e perbashket = 8.20 m²

Siperfaqe Totale = 64.30 m²

PLANIMETRIA E OBJEKTIT



APARTAMENTI C2 (2+1)

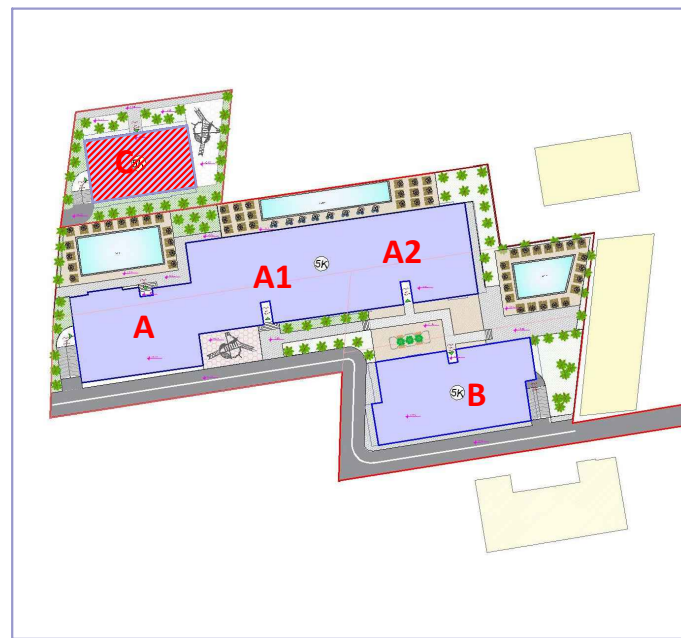
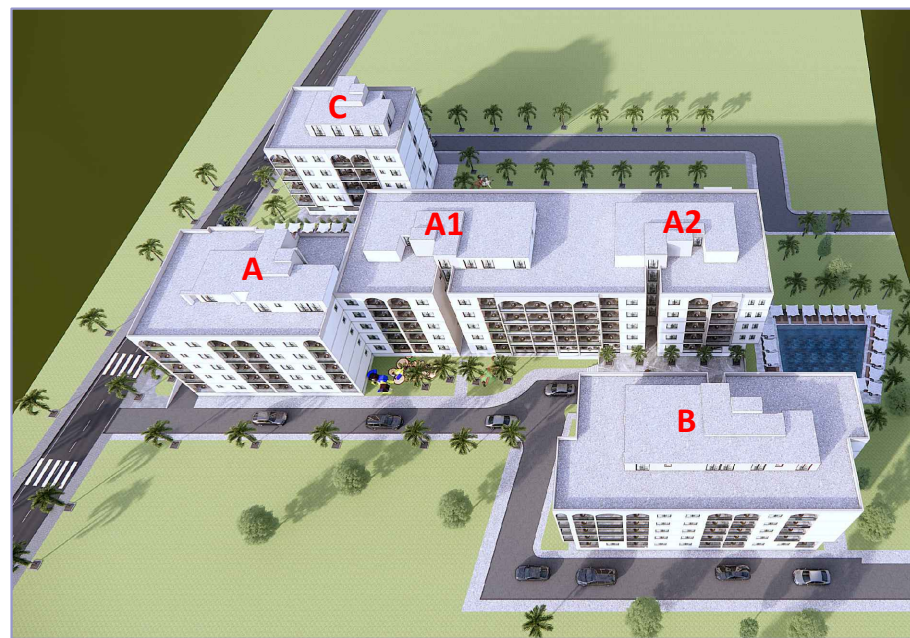
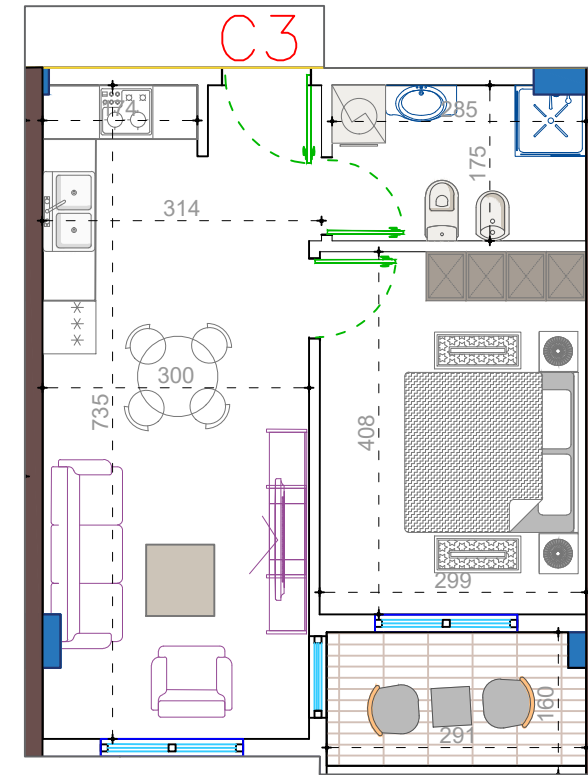
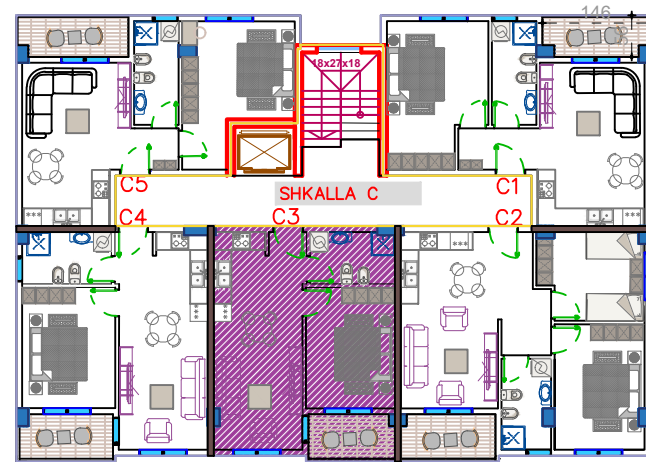
(Objekti C - Shkalla C)

Siperfaqe e apartamentit = 67.00 m²

Siperfaqe e perbashket = 9.10 m²

Siperfaqe Totale = 76.10 m²

PLANIMETRIA E OBJEKTIT



APARTAMENTI C3 (1+1)

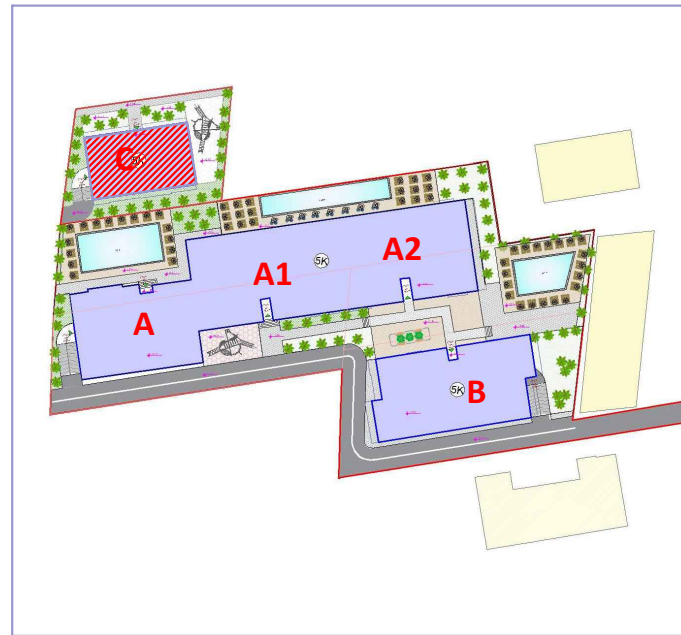
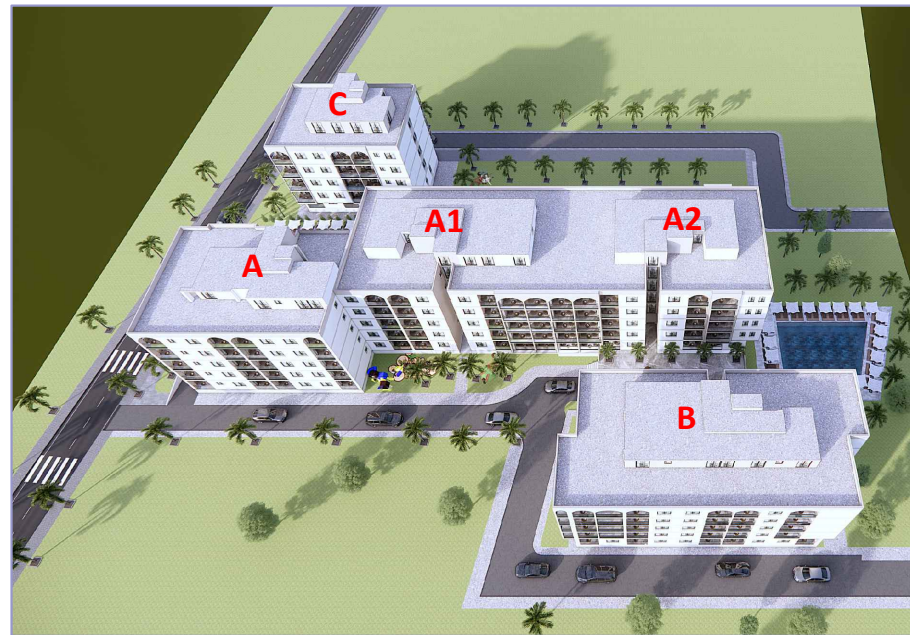
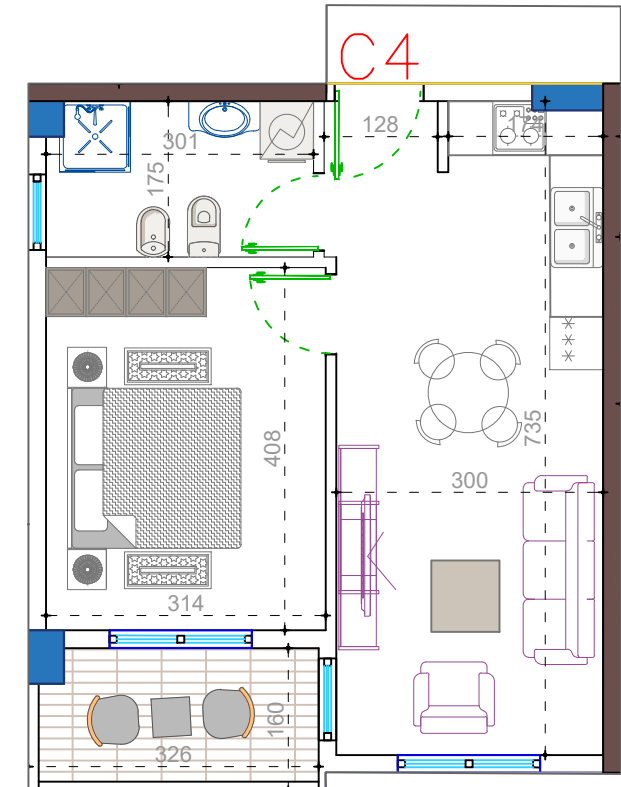
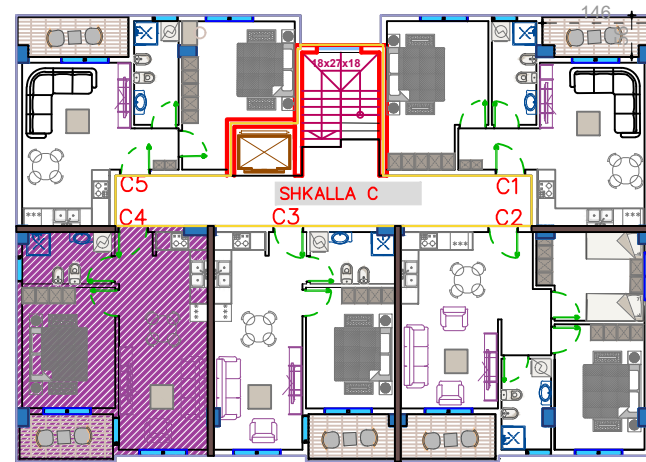
(Objekti C - Shkalla C)

Siperfaqe e apartamentit = 49.60 m²

Siperfaqe e perbashket = 7.20 m²

Siperfaqe Totale = 56.80 m²

PLANIMETRIA E OBJEKTIT



APARTAMENTI C4 (1+1)

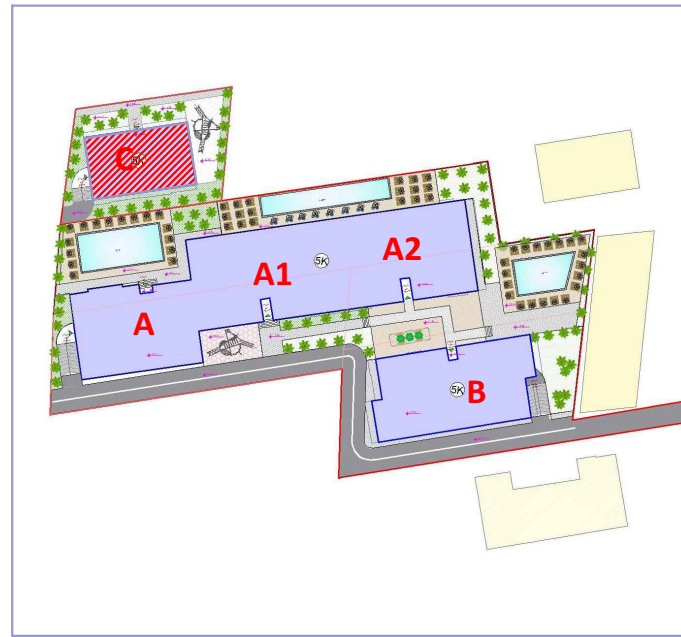
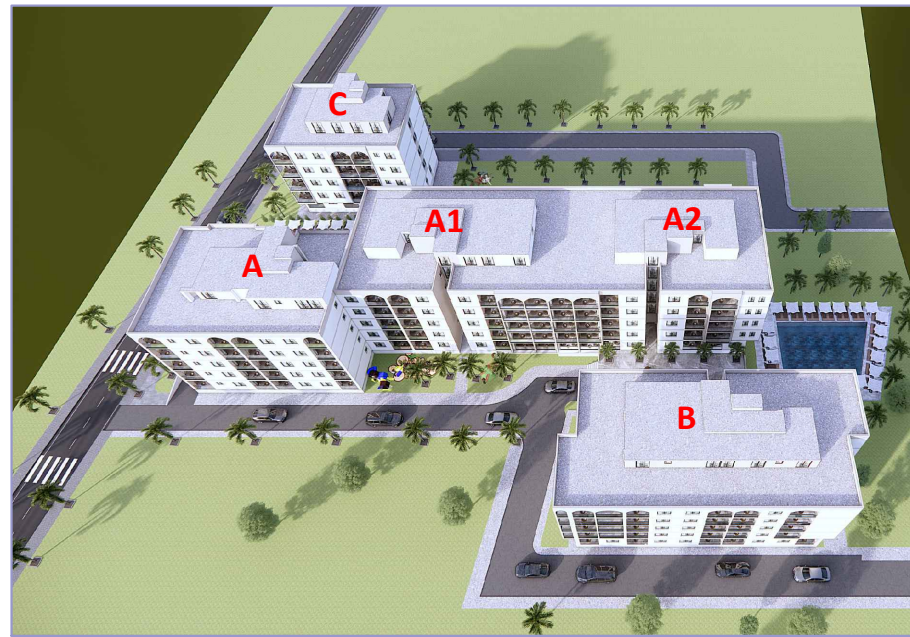
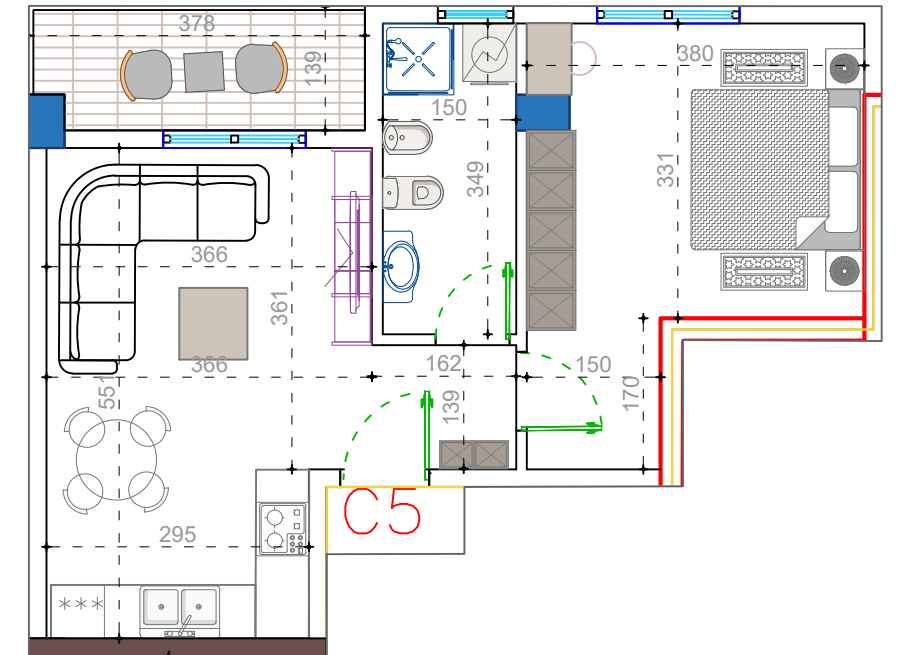
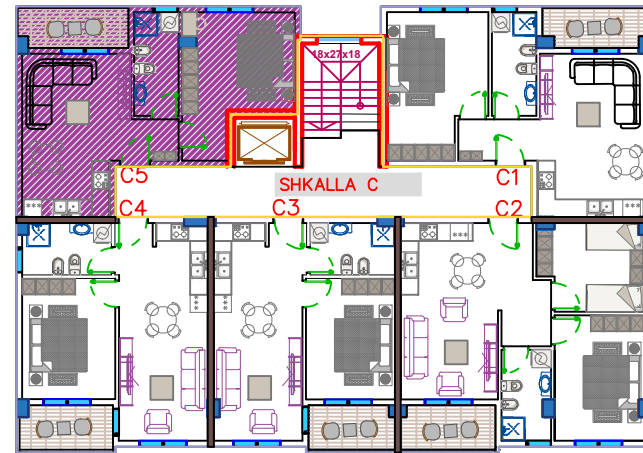
(Objekti C - Shkalla C)

Siperfaqe e apartamentit = 51.25 m2

Siperfaqe e perbashket = 7.50 m2

Siperfaqe Totale = 58.75 m2

PLANIMETRIA E OBJEKTIT

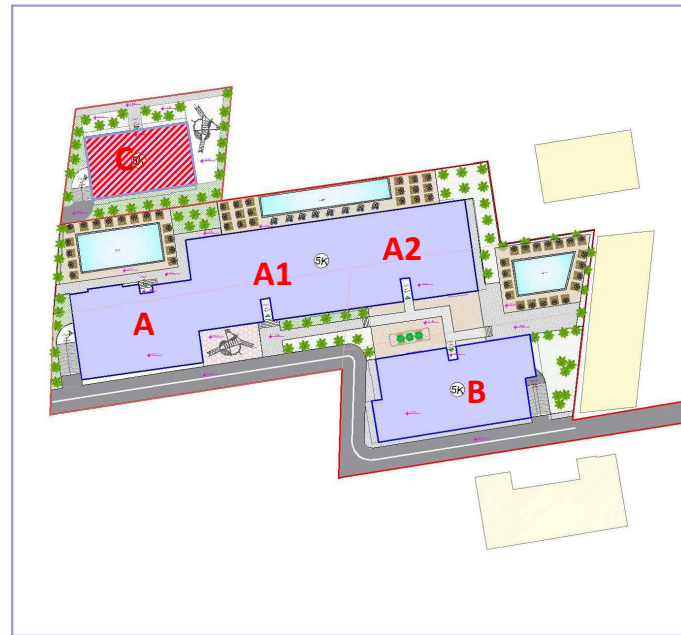
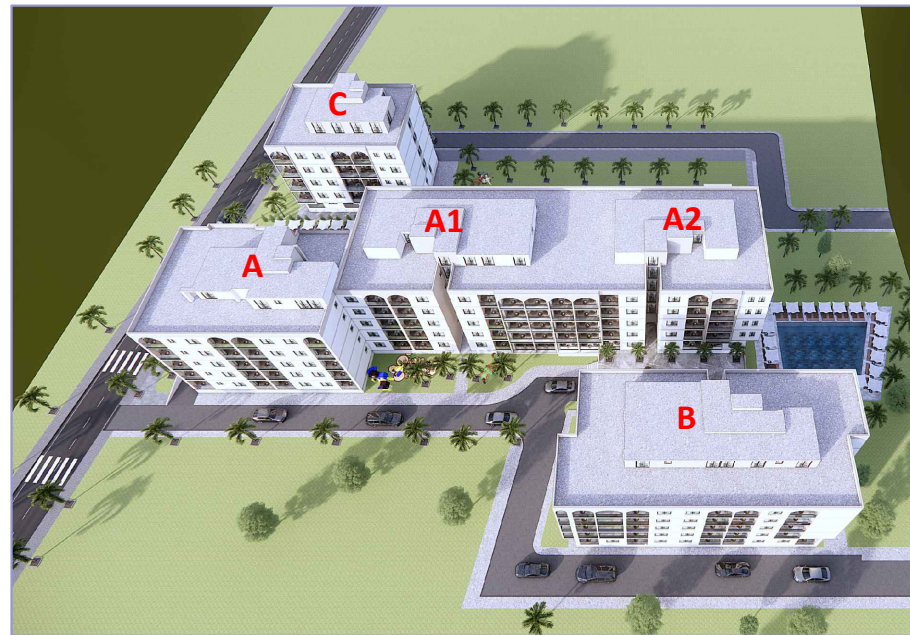
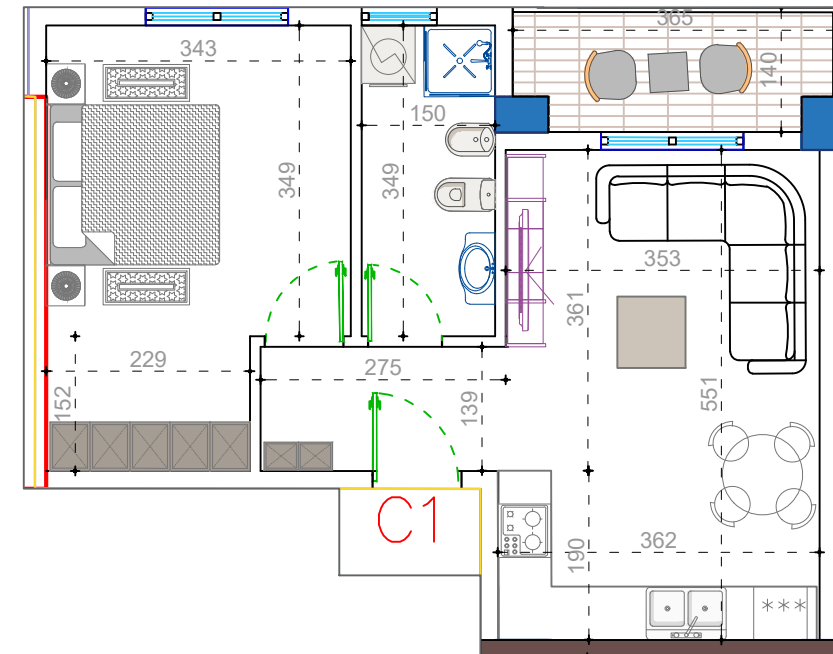
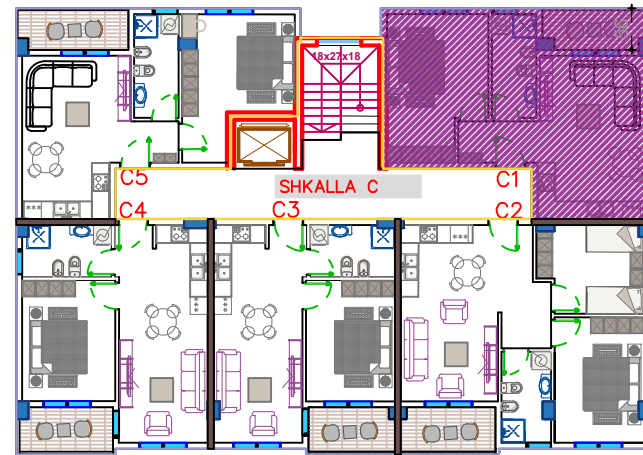


APARTAMENTI C5 (1+1)

(Objekti C - Shkalla C)

Siperfaqe e apartamentit = 53.50 m²
 Siperfaqe e perbashket = 7.80 m²
 Siperfaqe Totale = 61.30 m²

PLANIMETRIA E OBJEKTIT

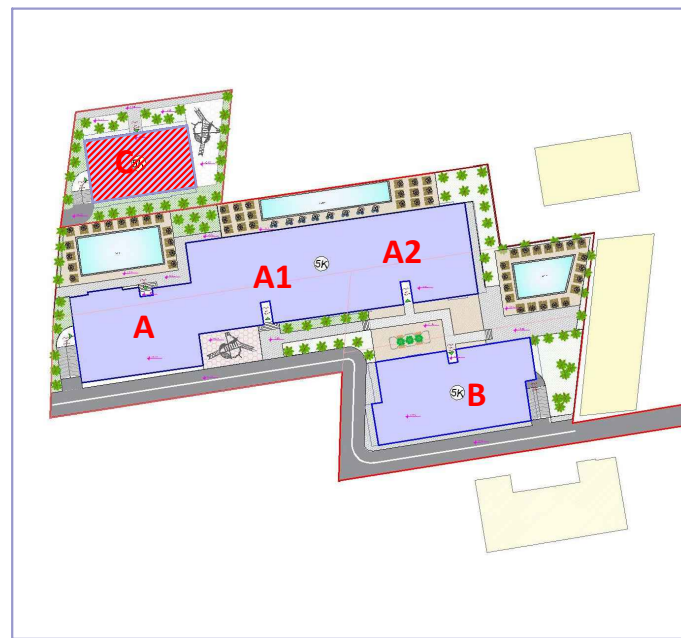
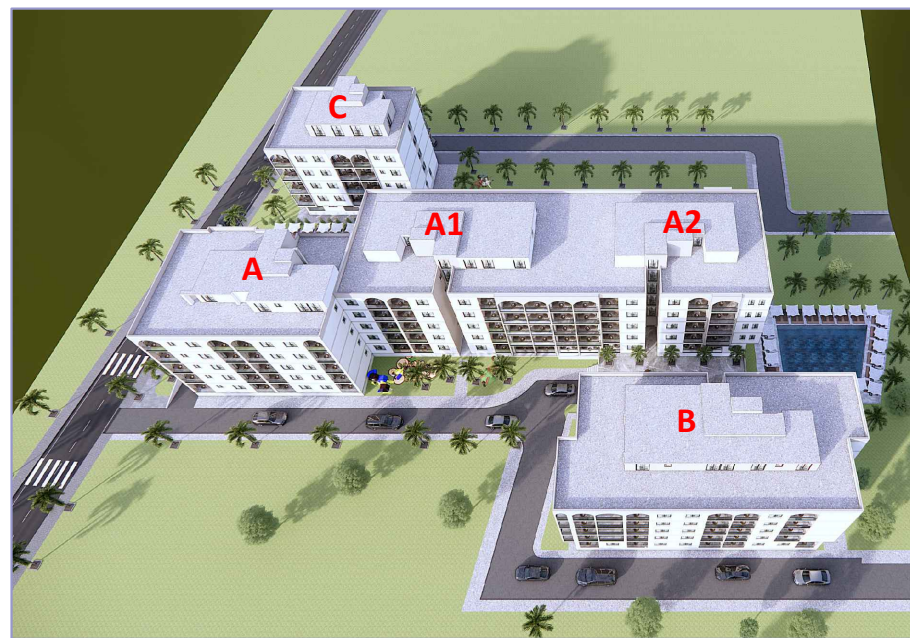
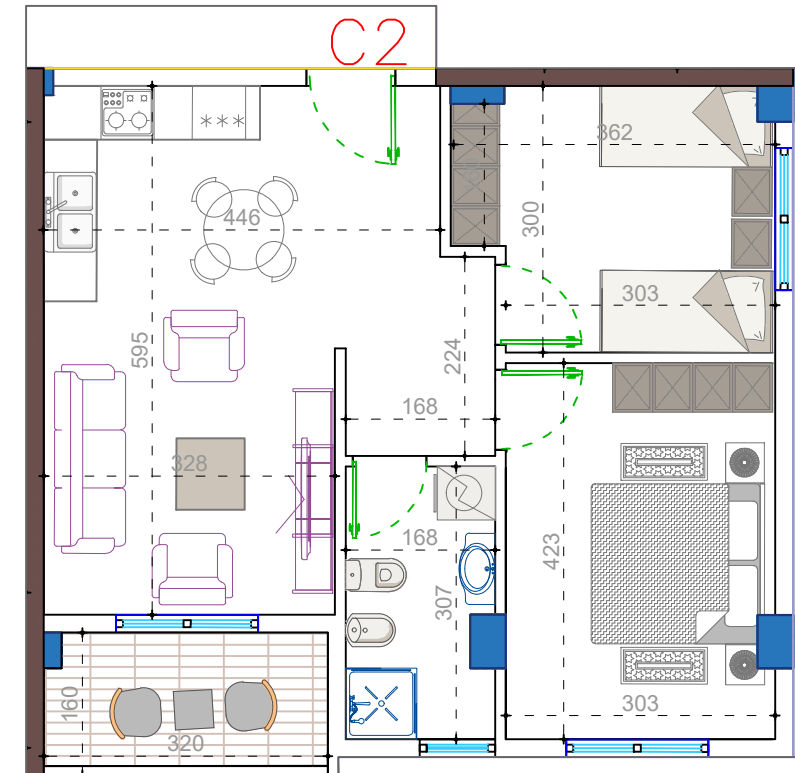
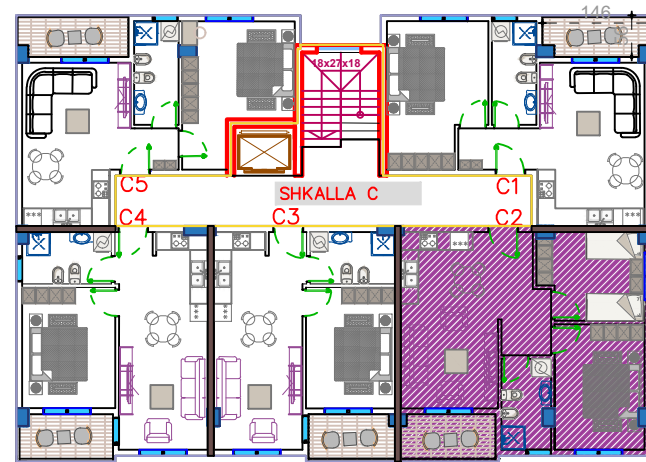


APARTAMENTI C1 (1+1)

(Objekti C - Shkalla C)

Siperfaqe e apartamentit = 56.10 m²
 Siperfaqe e perbashket = 8.20 m²
 Siperfaqe Totale = 64.30 m²

PLANIMETRIA E OBJEKTIT

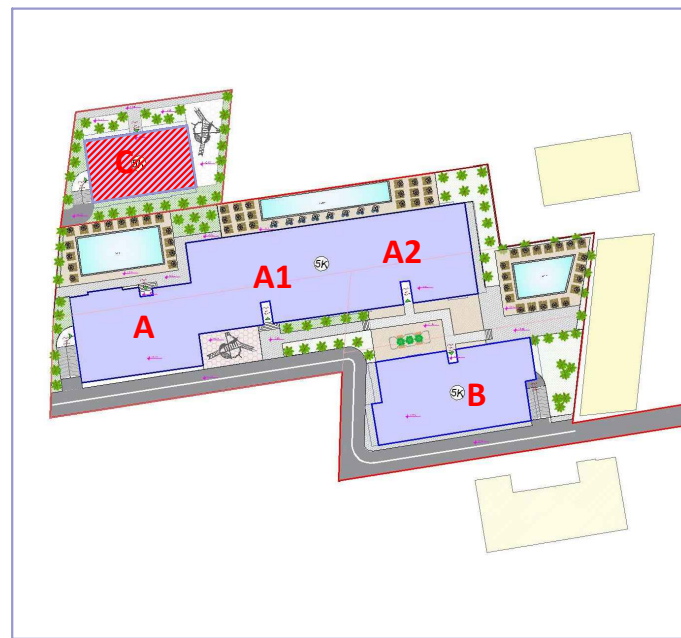
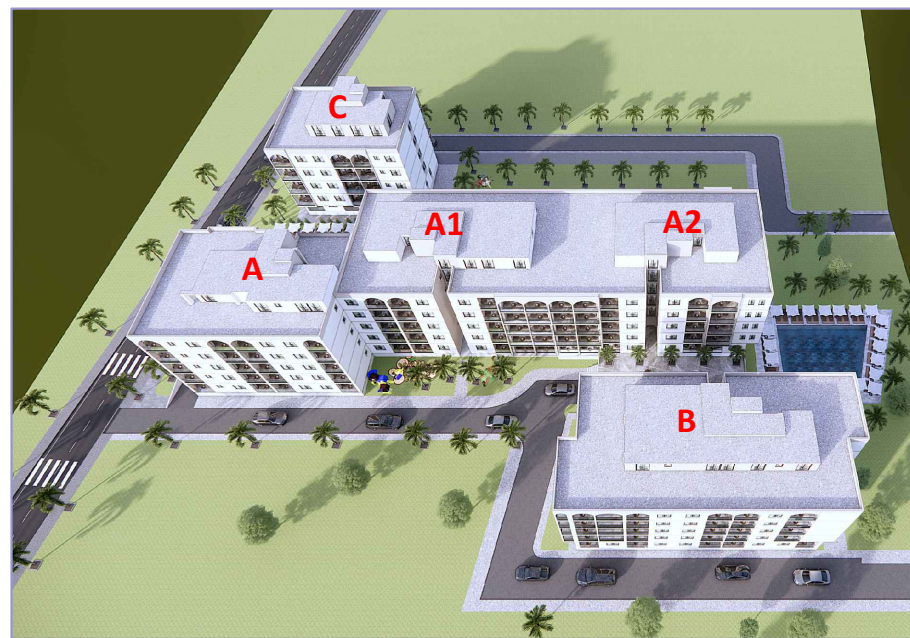
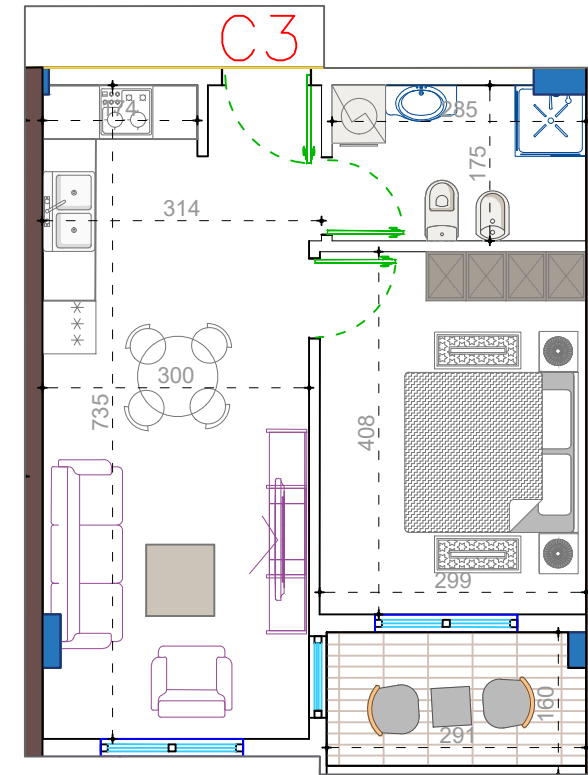
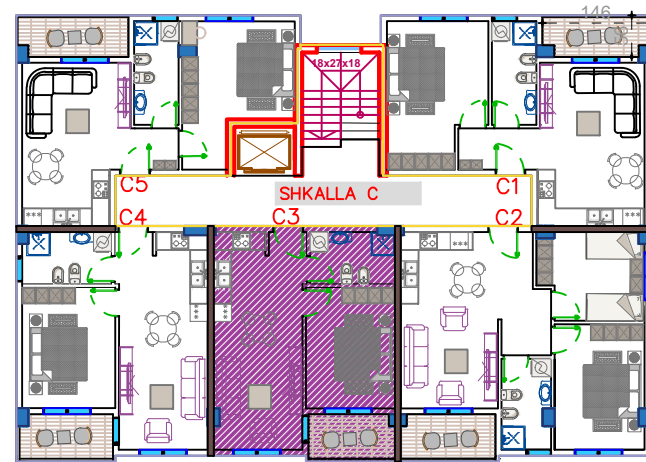


APARTAMENTI C2 (2+1)

(Objekti C - Shkalla C)

Siperfaqe e apartamentit = 67.00 m²
Siperfaqe e perbashket = 9.10 m²
Siperfaqe Totale = 76.10 m²

PLANIMETRIA E OBJEKTIT

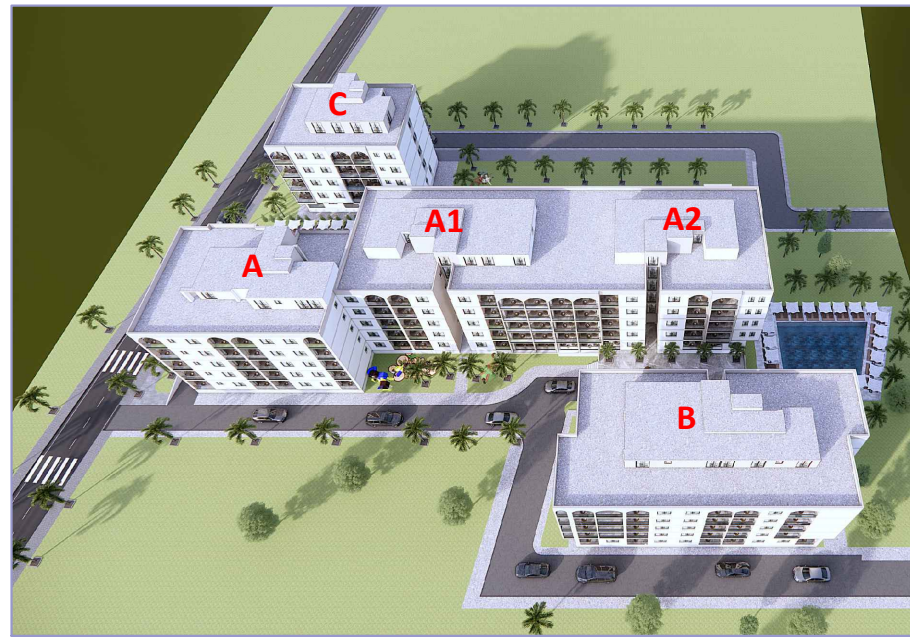
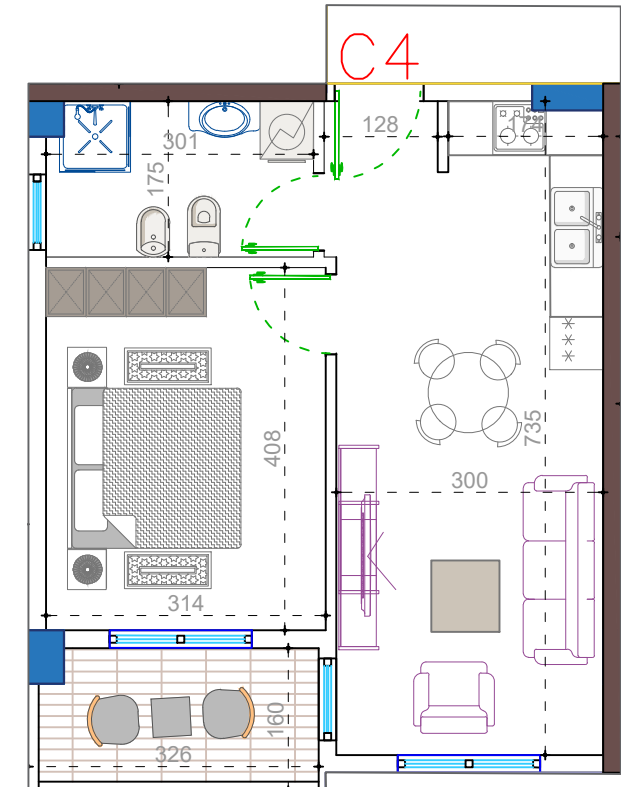
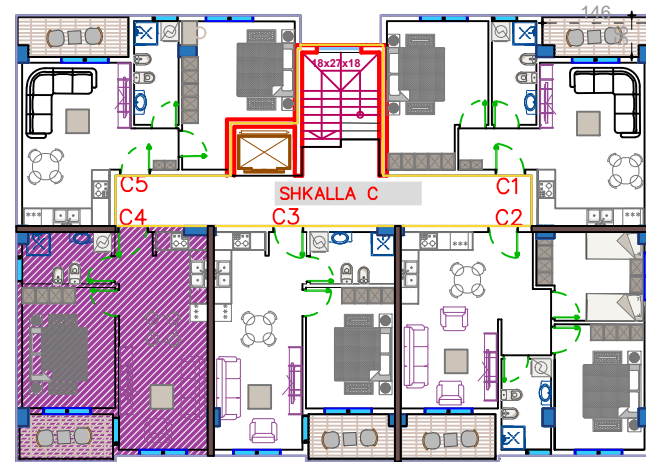


APARTAMENTI C3 (1+1)

(Objekti C - Shkalla C)

Siperfaqe e apartamentit = 49.60 m²
 Siperfaqe e perbashket = 7.20 m²
 Siperfaqe Totale = 56.80 m²

PLANIMETRIA E OBJEKTIT

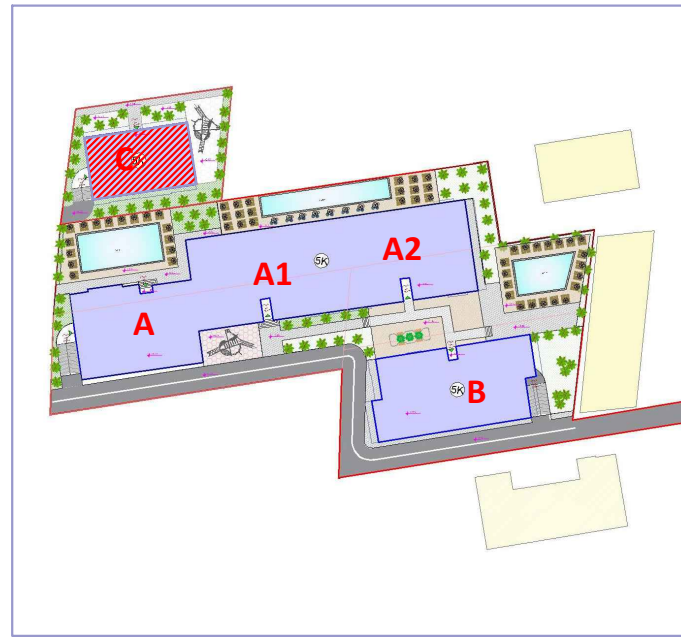
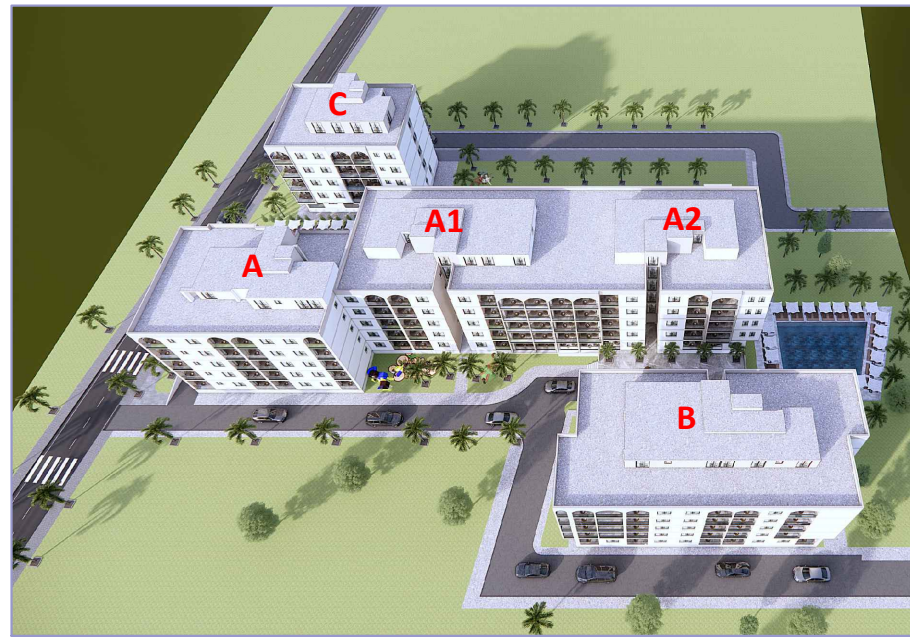
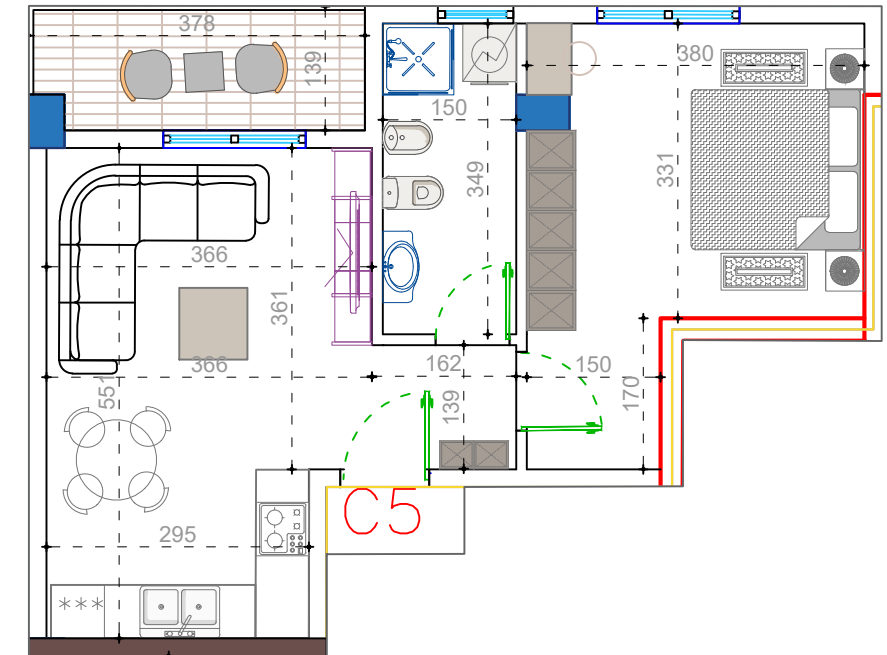
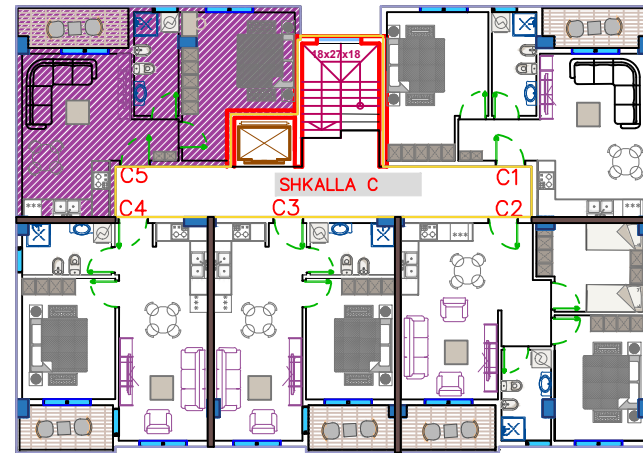


APARTAMENTI C4 (1+1)

(Objekti C - Shkalla C)

Siperfaqe e apartamentit = 51.25 m2
 Siperfaqe e perbashket = 7.50 m2
 Siperfaqe Totale = 58.75 m2

PLANIMETRIA E OBJEKTIT



APARTAMENTI C5 (1+1)

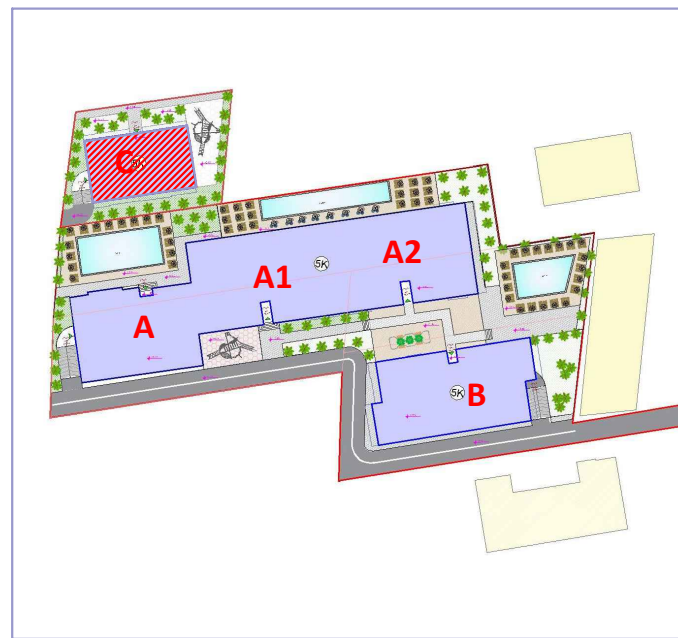
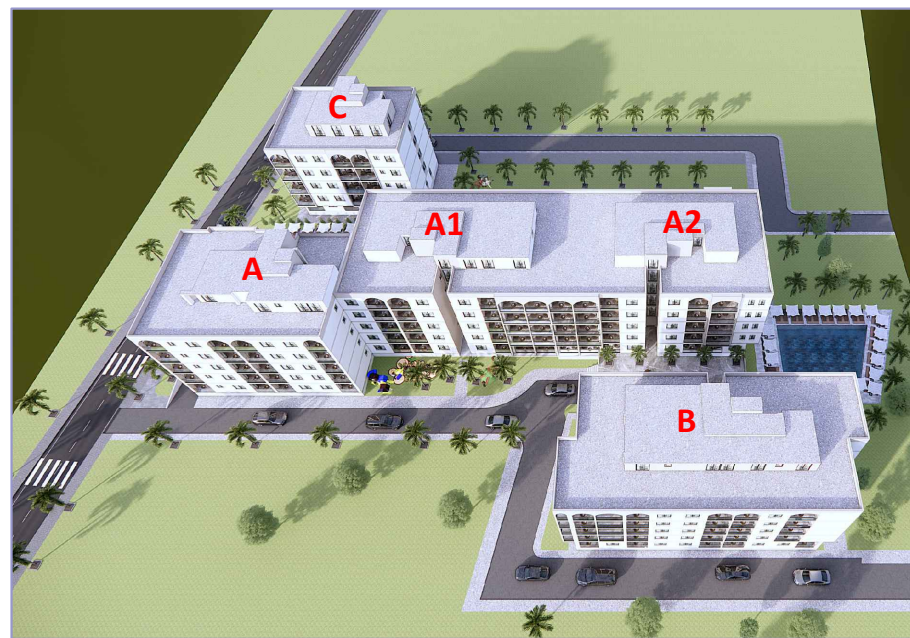
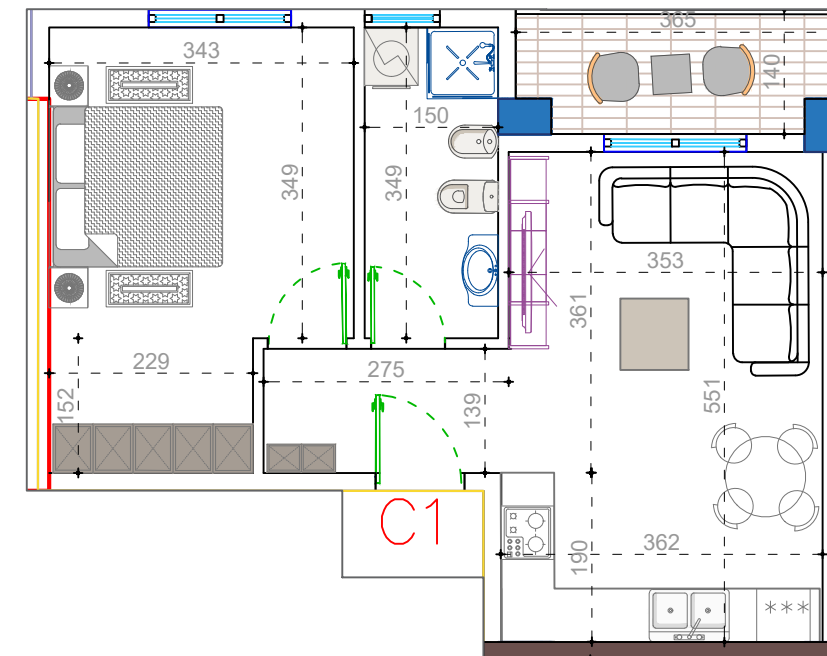
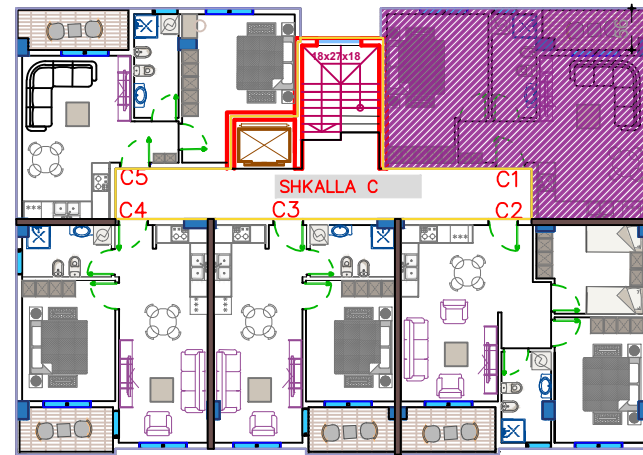
(Objekti C - Shkalla C)

Siperfaqe e apartamentit = 53.50 m²

Siperfaqe e perbashket = 7.80 m²

Siperfaqe Totale = 61.30 m²

PLANIMETRIA E OBJEKTIT

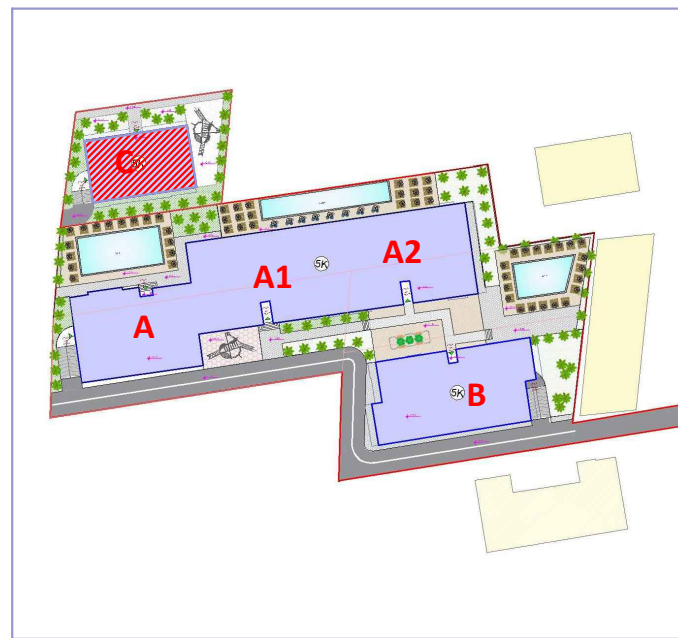
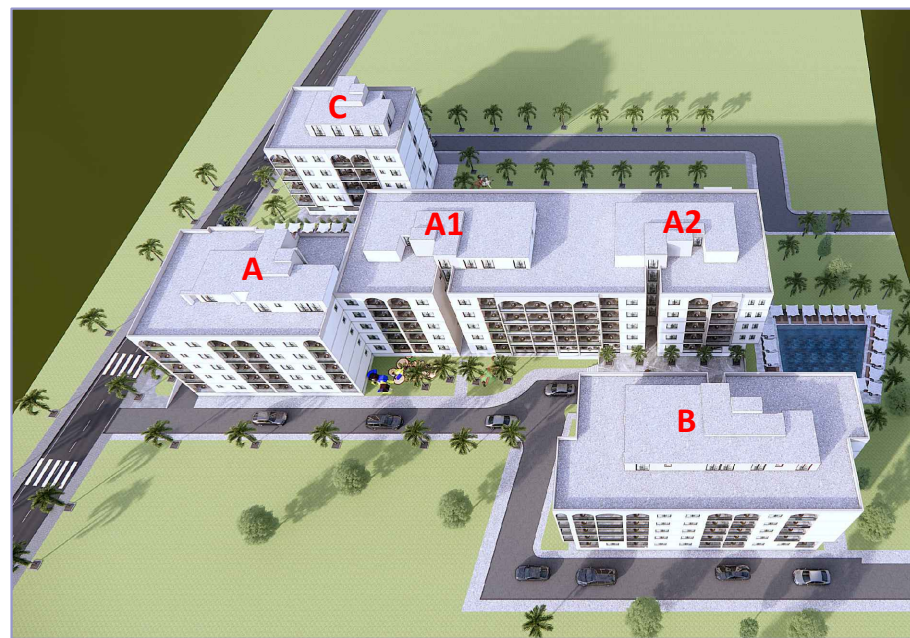
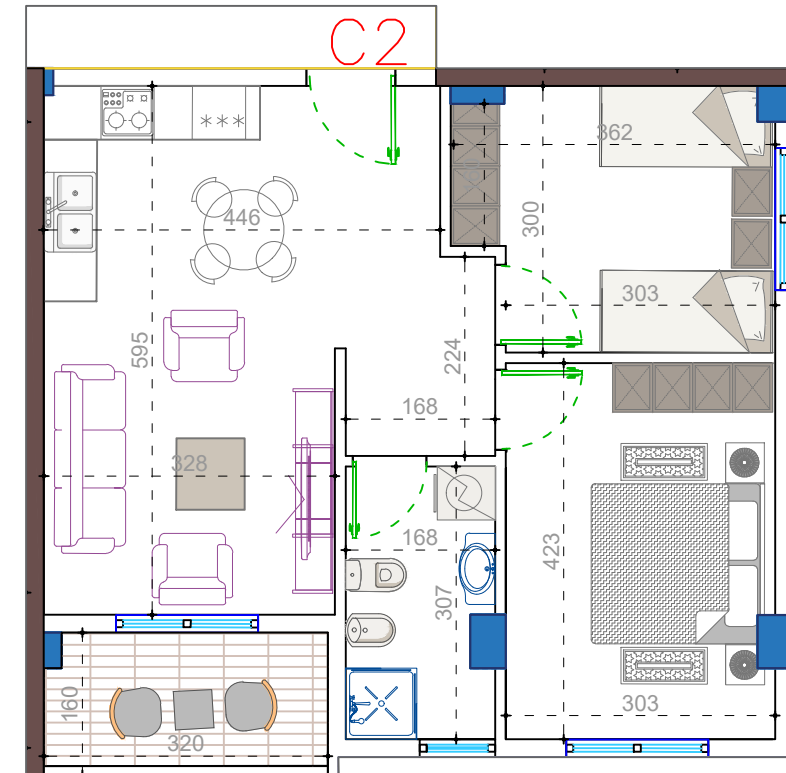
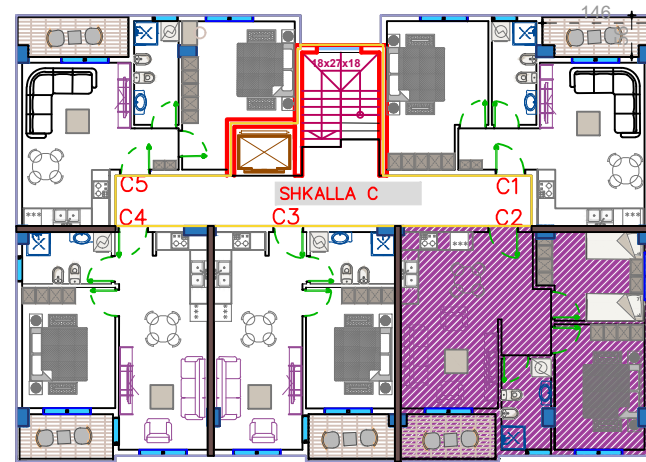


APARTAMENTI C1 (1+1)

(Objekti C - Shkalla C)

Siperfaqe e apartamentit = 56.10 m²
 Siperfaqe e perbashket = 8.20 m²
 Siperfaqe Totale = 64.30 m²

PLANIMETRIA E OBJEKTIT

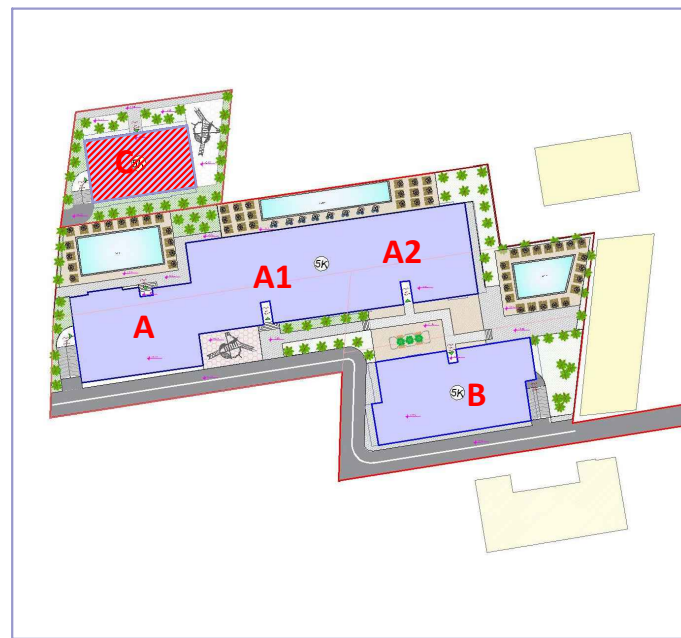
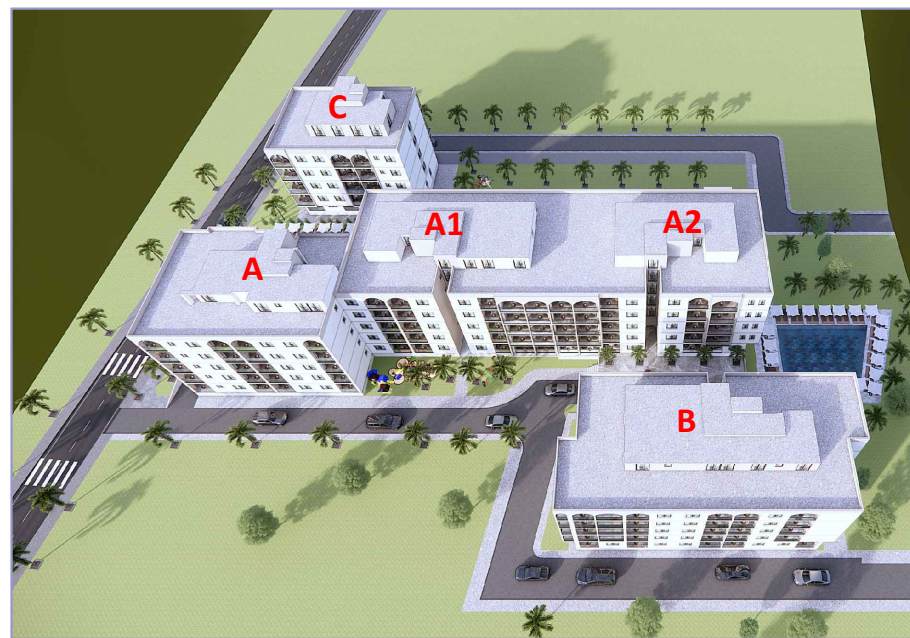
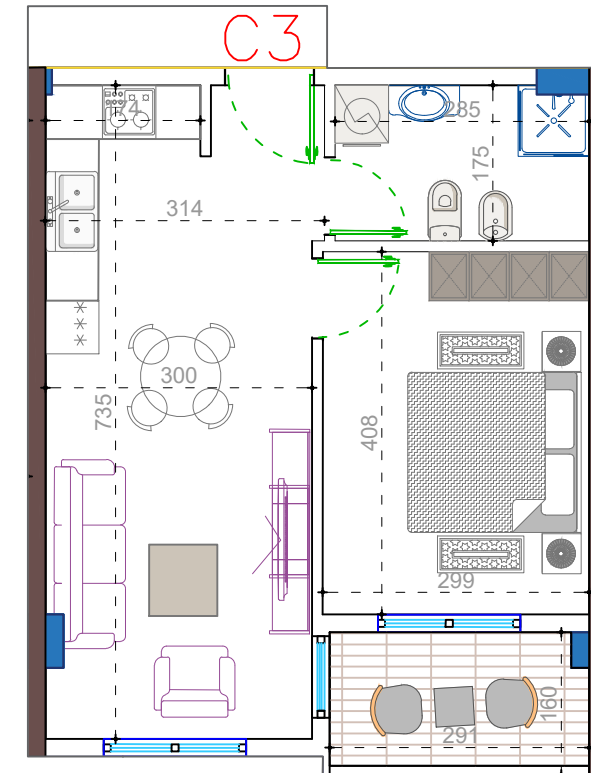
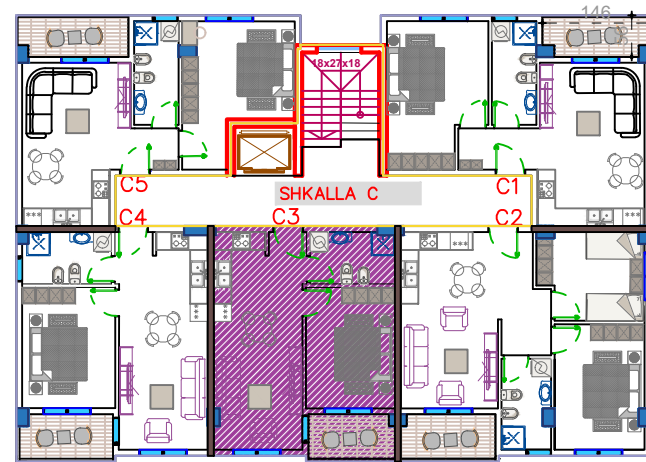


APARTAMENTI C2 (2+1)

(Objekti C - Shkalla C)

Siperfaqe e apartamentit = 67.00 m²
Siperfaqe e perbashket = 9.10 m²
Siperfaqe Totale = 76.10 m²

PLANIMETRIA E OBJEKTIT

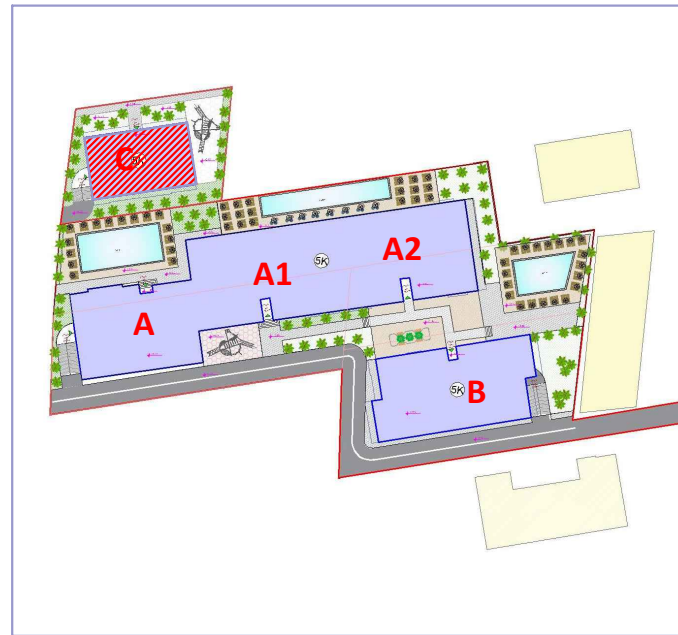
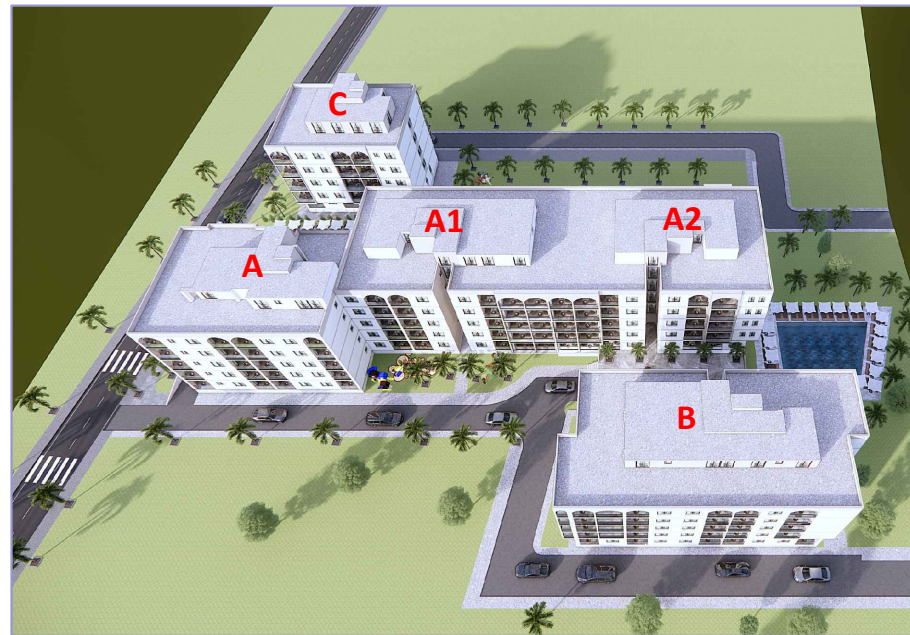
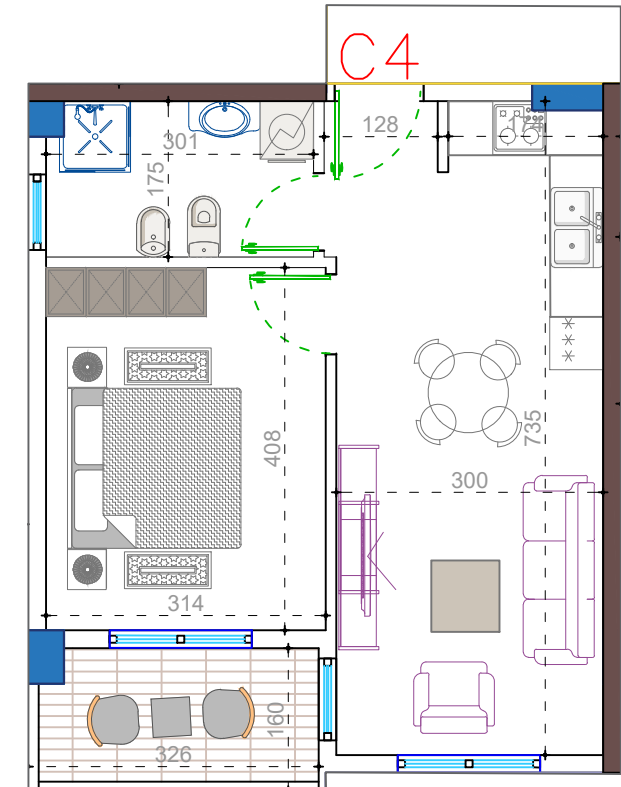
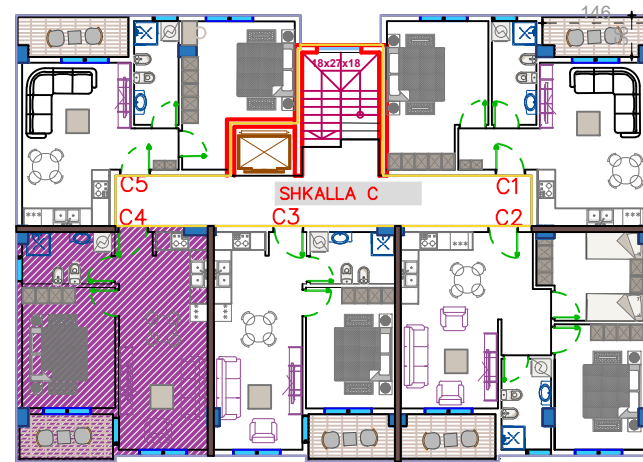


APARTAMENTI C3 (1+1)

(Objekti C - Shkalla C)

Siperfaqe e apartamentit = 49.60 m²
 Siperfaqe e perbashket = 7.20 m²
 Siperfaqe Totale = 56.80 m²

PLANIMETRIA E OBJEKTIT



APARTAMENTI C4 (1+1)

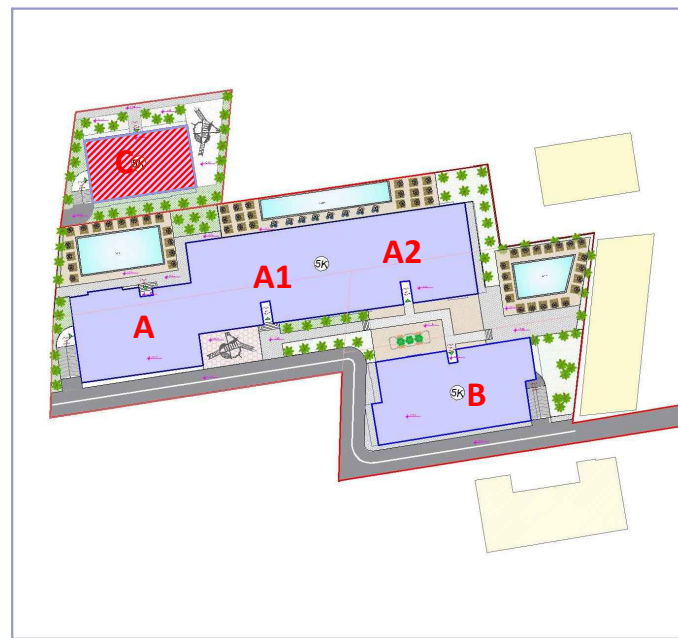
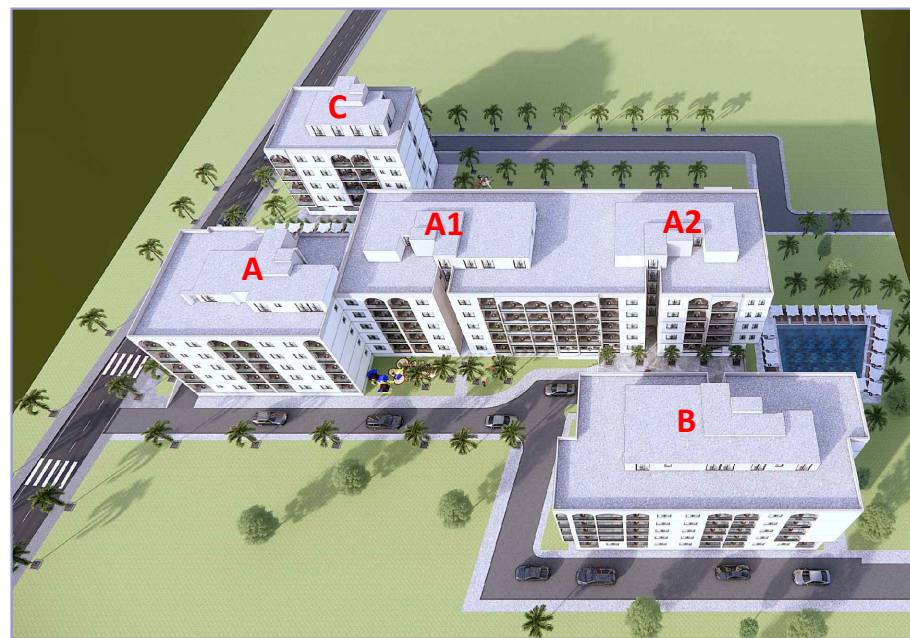
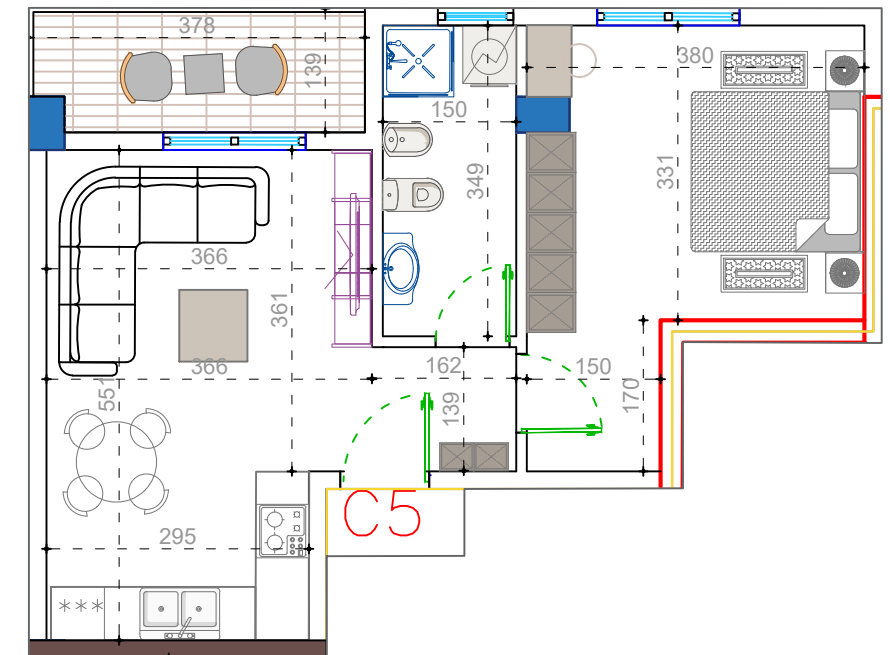
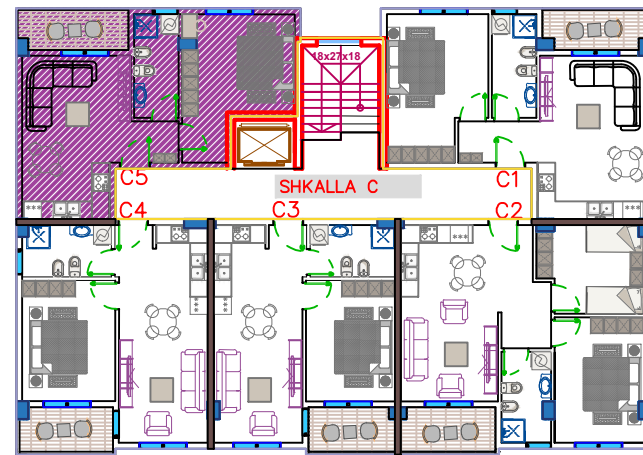
(Objekti C - Shkalla C)

Siperfaqe e apartamentit = 51.25 m2

Siperfaqe e perbashket = 7.50 m2

Siperfaqe Totale = 58.75 m2

PLANIMETRIA E OBJEKTIT



APARTAMENTI C5 (1+1)

(Objekti C - Shkalla C)

Siperfaqe e apartamentit = 53.50 m²

Siperfaqe e perbashket = 7.80 m²

Siperfaqe Totale = 61.30 m²